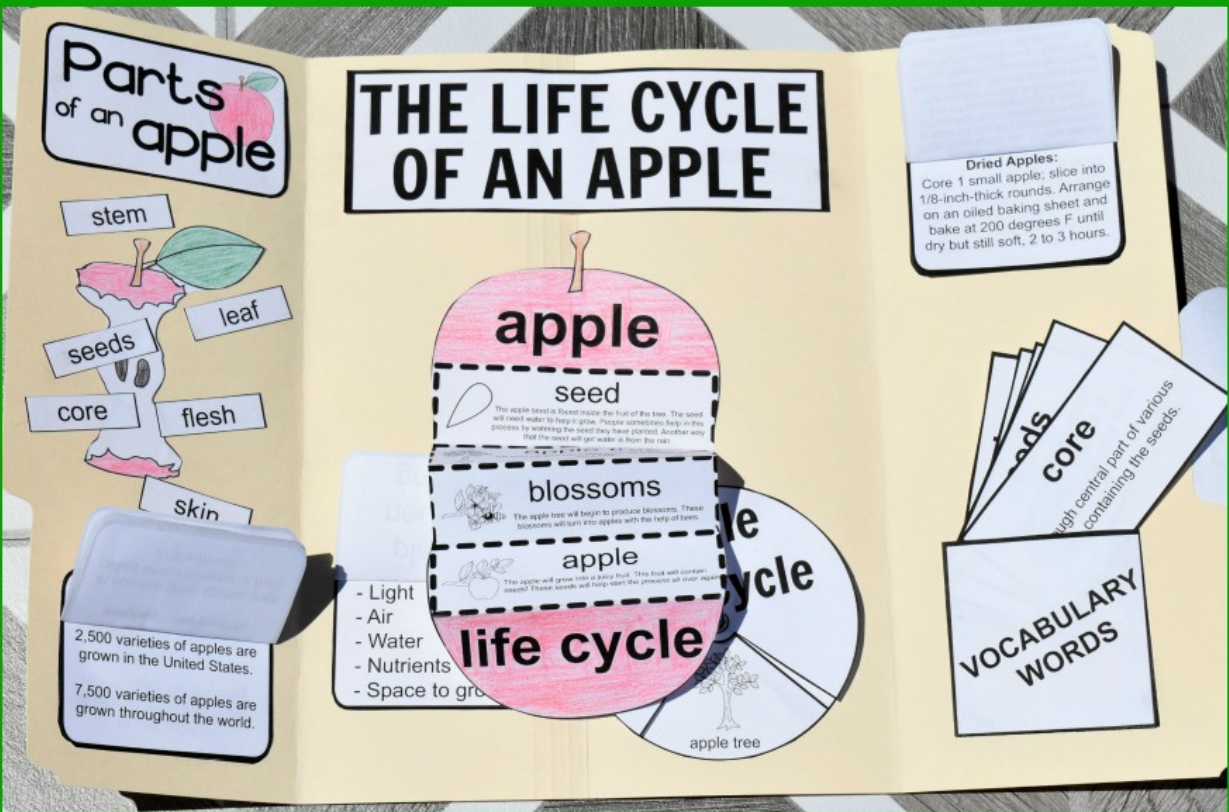
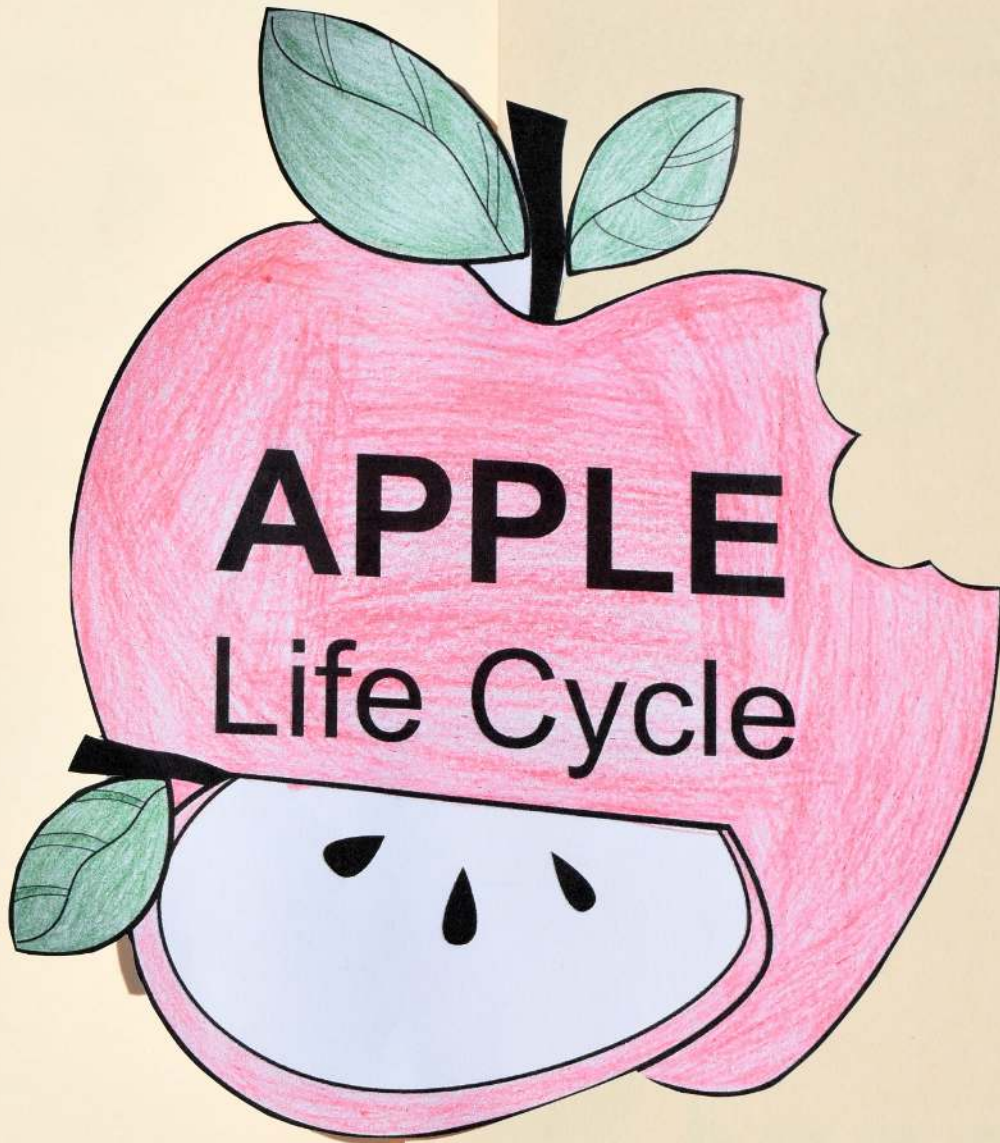


APPLE LIFE CYCLE LAPBOOK



This lapbook
belongs to:



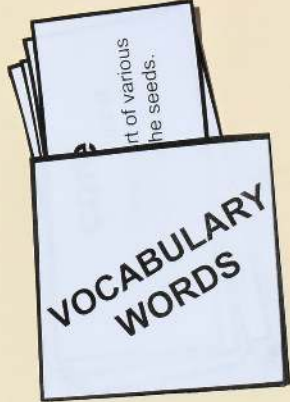
Parts of an apple



THE LIFE CYCLE OF AN APPLE

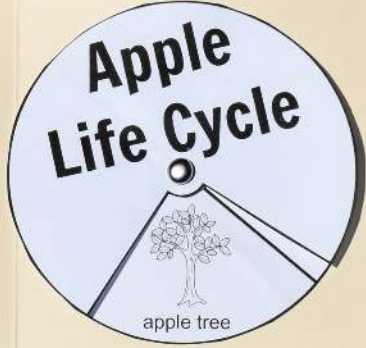


Recipes with Apples

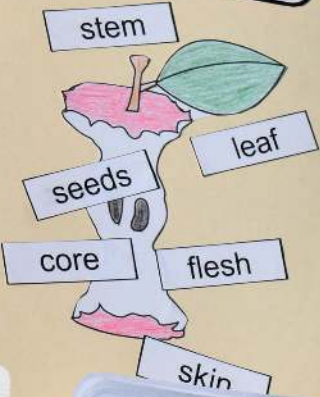


Apple Facts

What do plants need to grow?



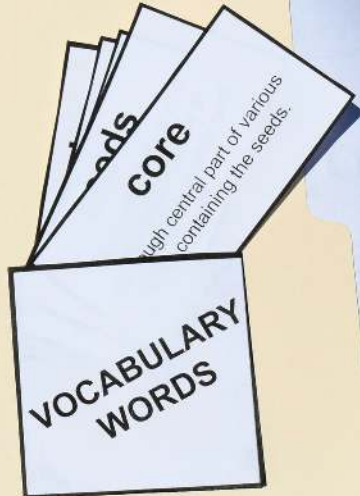
Parts of an apple



THE LIFE CYCLE OF AN APPLE



Dried Apples:
Core 1 small apple; slice into 1/8-inch-thick rounds. Arrange on an oiled baking sheet and bake at 200 degrees F until dry but still soft, 2 to 3 hours.



2,500 varieties of apples are grown in the United States.
7,500 varieties of apples are grown throughout the world.

- Light
- Air
- Water
- Nutrients
- Space to grow



How to create your lapbook:

Supplies Needed:

- File Folder
- Glue
- Crayons, Markers
- Scissors
- or Colored Pencils
- Brad or Paper Clip

Lapbook Cover

To create the cover of the lapbook, color each item on the page. When finished, cut each item out and glue to desired spot on the front flaps of the lapbook.

Center

Print and cut out the "The Life Cycle of an Apple" banner and glue it to the top of the center portion of the lapbook.

Flip Flaps

There are 3 flip flaps in this lapbook. Print, cut and glue them together using the area above dotted line as your guide to put the glue. Place them in the desired area in the lapbook.

Vocabulary Words

Cut out the square with the dotted lines that says "Vocabulary Words" on it. Cut the small lines that say 'cut' next to them. Fold the dotted lined areas down to create a pocket. Glue the folded areas and place in the lapbook. Cut out the Vocabulary Words cards and put them in the Vocabulary Words pocket.

Parts of an apple activity

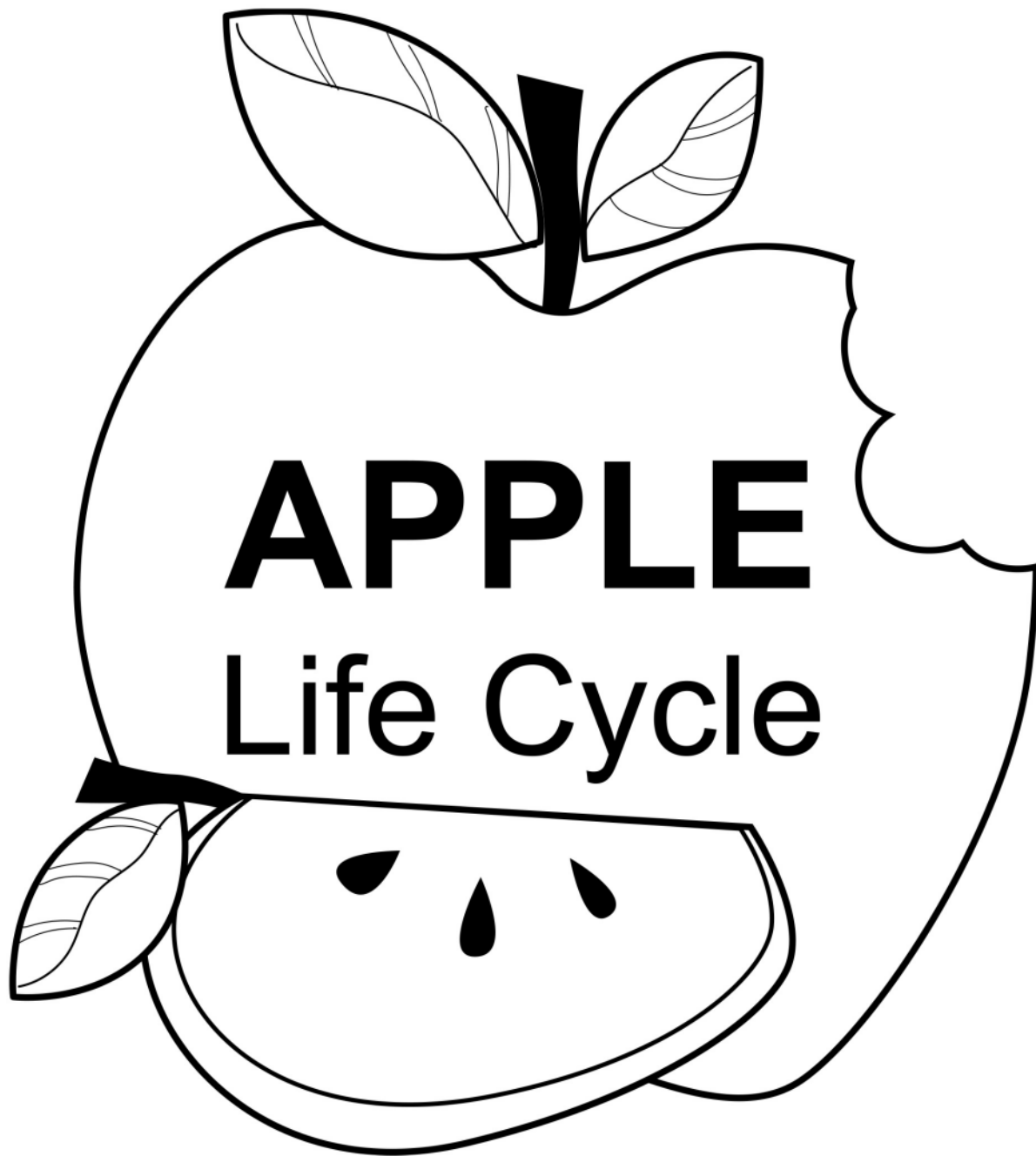
Cut out the "Parts of an apple" square and glue to lapbook flap. Next, cut out the eaten apple and glue it beneath the 'parts of an apple' square. Then, cut out the squares with each part of an apple and glue them in the proper place around the apple.

Accordion-style 'apple life cycle'

Color the top and bottom of the apple shaped 'apple life cycle' accordion-style flap. Fold on the dotted lines starting with the bottom 'life cycle' portion to the top until it's folded into an apple shape. Glue into lapbook.

Spinner

Cut out both portions of the spinner. Put the 'apple life cycle' portion on top of the other circle and secure in the center dot with a brad or a paperclip. Glue in the lapbook.



This lapbook
belongs to:

THE LIFE CYCLE OF AN APPLE

What do
plants
need to
grow?

- Light
- Air
- Water
- Nutrients
- Space to grow

Recipes with Apples

Dried Apples:

Core 1 small apple; slice into 1/8-inch-thick rounds. Arrange on an oiled baking sheet and bake at 200 degrees F until dry but still soft, 2 to 3 hours.

Apple Popcorn Balls:

Make Dried Apples (No. 1); chop enough to make 1/2 cup. Boil 1 cup brown sugar, 1/2 cup each butter and light corn syrup, and 1/4 teaspoon salt until a candy thermometer reaches 300 degrees F, about 8 minutes. Mix with 6 cups popcorn, 1/2 cup chopped pecans and the chopped dried apples. Transfer to a buttered pan; cool slightly, then form into balls.

Scary Apple Mouths:

Quarter and core a red apple; brush with lemon juice. Cut out a wedge from the skin side of each piece so it looks like a mouth. Fill with peanut butter, then insert sliced almonds for "teeth."

Applesauce:

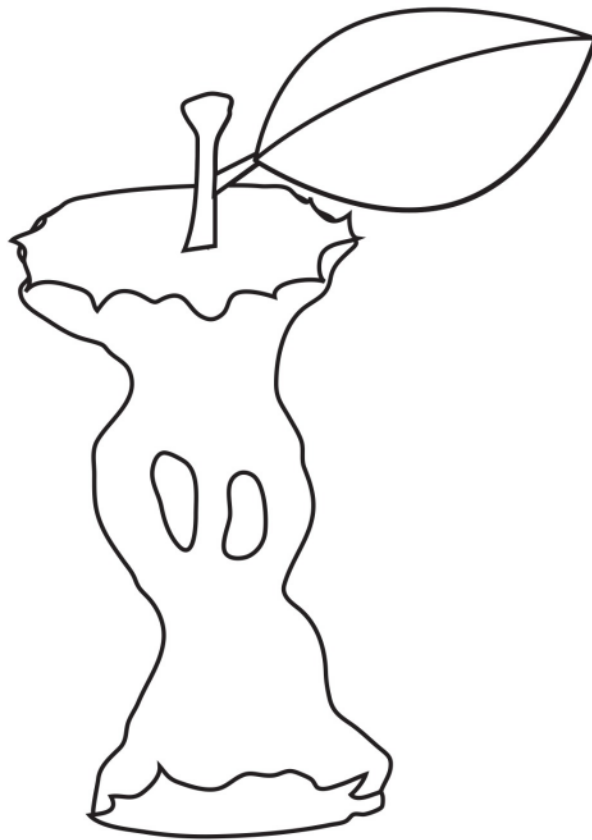
Quarter 4 pounds apples. Simmer with 1 cup water, 3 tablespoons sugar and a pinch of salt, partially covered, until soft, 25 to 30 minutes.

Pass through a food mill. Whisk in 2 tablespoons butter.

Apple Butter:

Cook 1/2 cup sugar in a large skillet until deep amber. Add 4 cups Applesauce (No. 7) and 1/2 teaspoon cinnamon; cook, stirring occasionally, until reduced by half, about 30 minutes.

Parts of an apple



flesh

leaf

stem

seeds

core

skin



apple

seed



The apple seed is found inside the fruit of the tree. The seed will need water to help it grow. People sometimes help in this process by watering the seed they have planted. Another way that the seed will get water is from the rain.

apple tree



The seed will grow into a plant which will eventually grow into a tree!

blossoms



The apple tree will begin to produce blossoms. These blossoms will turn into apples with the help of bees.

apple



The apple will grow into a juicy fruit. This fruit will contain seeds! These seeds will help start the process all over again.

life cycle

Apple Facts

The crabapple is the only apple native to North America.

Apples come in all shades of reds, greens, and yellows.

Two pounds of apples make one 9-inch pie.

100 varieties of apples are grown commercially in the United States.

2,500 varieties of apples are grown in the United States.

7,500 varieties of apples are grown throughout the world.

The pilgrims planted the first United States apple trees in the Massachusetts Bay Colony.

Apples are a member of the rose family.

The largest apple picked weighed three pounds.

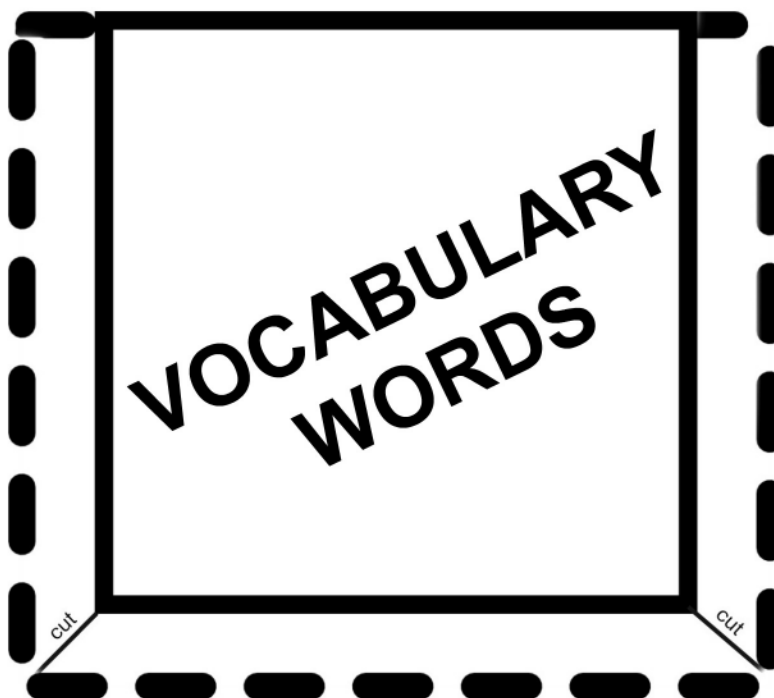
In colonial time, apples were called winter banana or melt-in-the-mouth.

seeds

a flowering plant's unit of reproduction, capable of developing into another such plant.

core

the tough central part of various fruits, containing the seeds.



tree

a woody perennial plant, typically having a single stem or trunk growing to a considerable height and bearing lateral branches at some distance from the ground.

blossom

a flower or a mass of flowers, especially on a tree or bush.

life cycle

the series of developments that take place in it from its beginning until the end of its usefulness.

Apple Life Cycle

