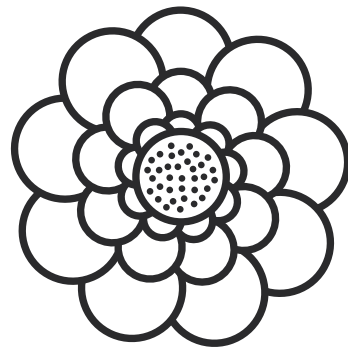
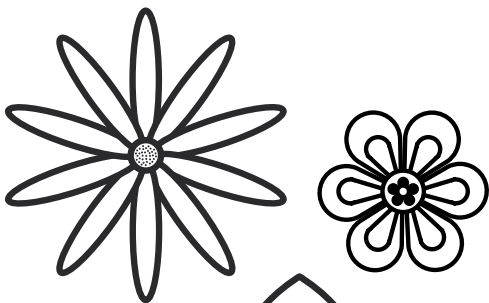


Spring Life Cycles Lap Books Pack

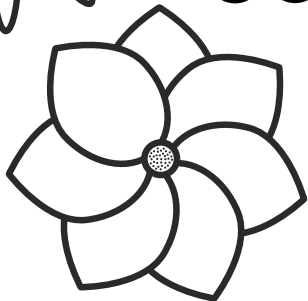
Bee



Frog



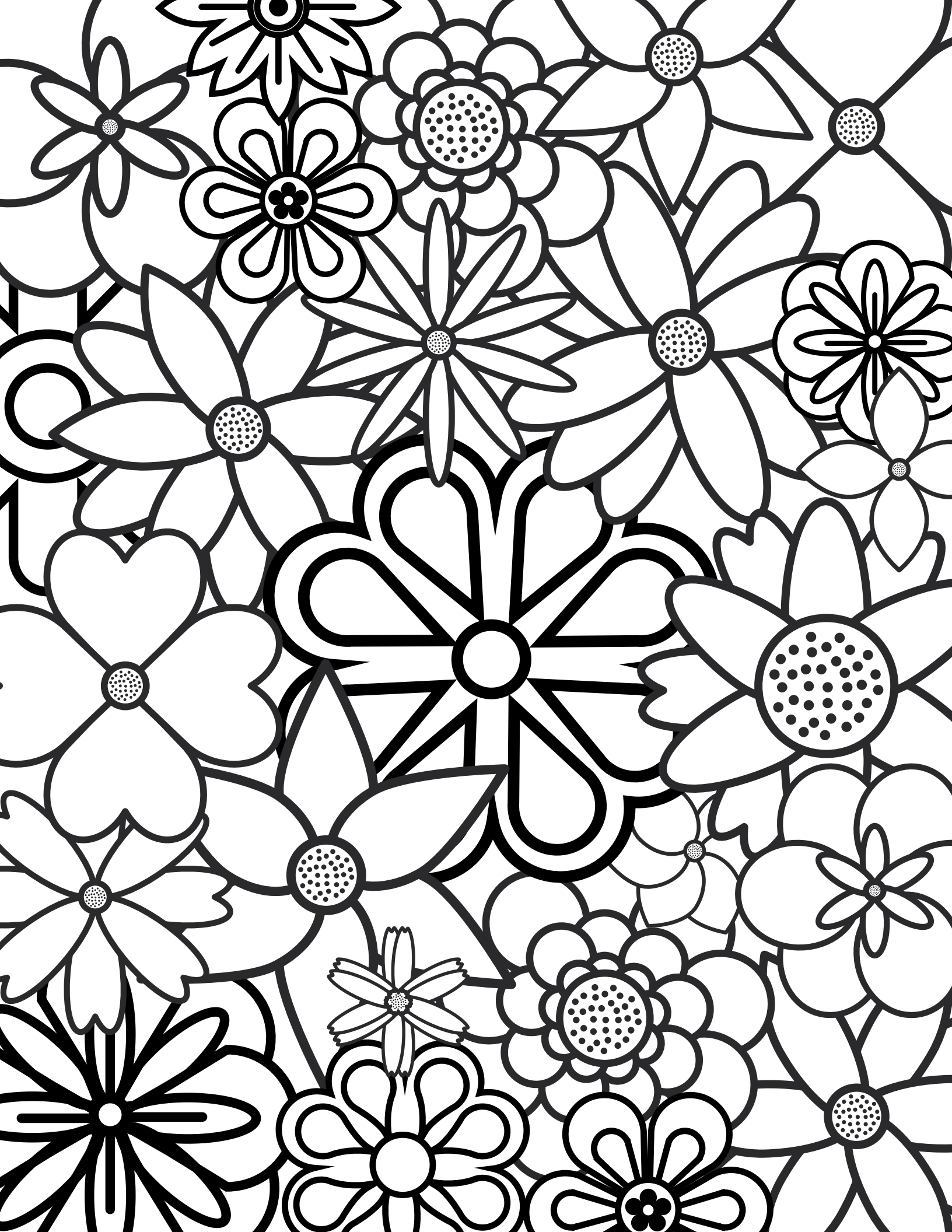
Flower



Butterfly

[For more fun Spring STEM Activities click here.](#)







How to create your lapbook:

Supplies Needed:

- File Folder
- Crayons, Markers or Colored Pencils

- Glue
- Scissors



Cover of Lapbook

To create the cover of the lapbook, color each item on the page. When finished, cut each item out and glue to desired spot on the front flaps of the lapbook.

Vocabulary Words

Cut out the "Vocabulary Words" square and the 2 sections of the words/definitions. Do not cut each word/definition out individually. Using the top line as a guide, glue the words to the definitions. Only glue the top area. When dried, cut the lines in between each section. Glue the "Vocabulary Words" square in desired area on the inner lapbook flap. Below it, glue the portion(s) containing the words and definitions.

Labelling Circles

Cut out each circle (with the blank label area on top) with the pictures of each step of the life cycle. Have your students label and glue them in the correct order on one side of their lapbook.

Blank Life Cycle

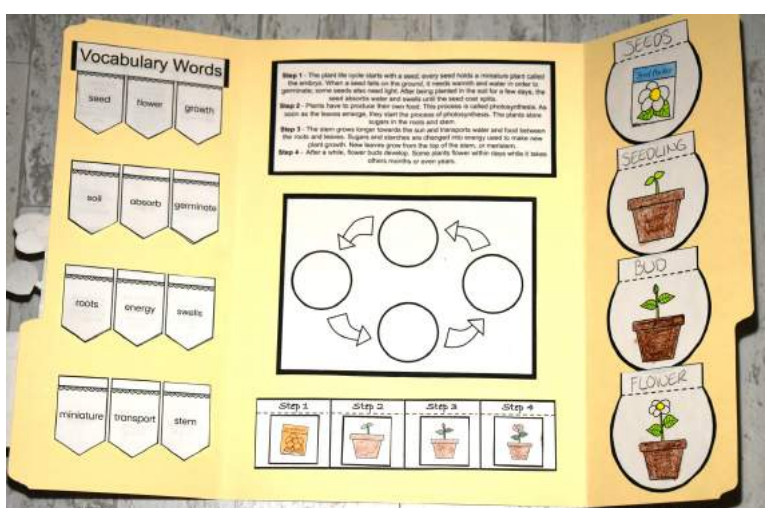
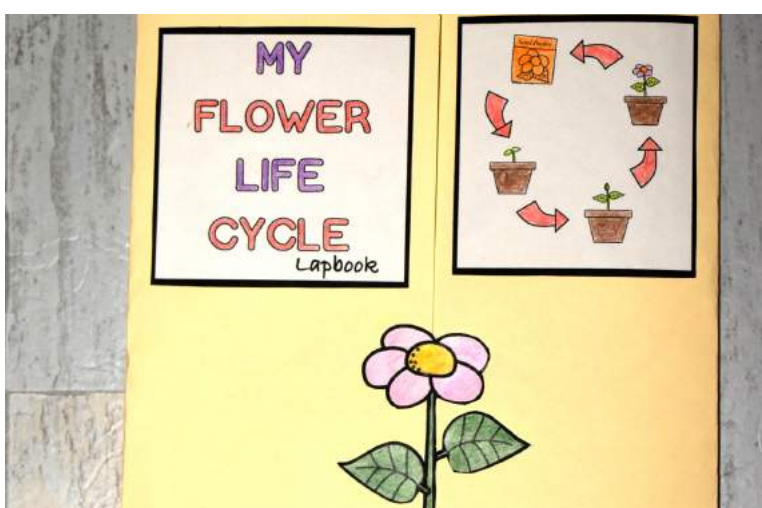
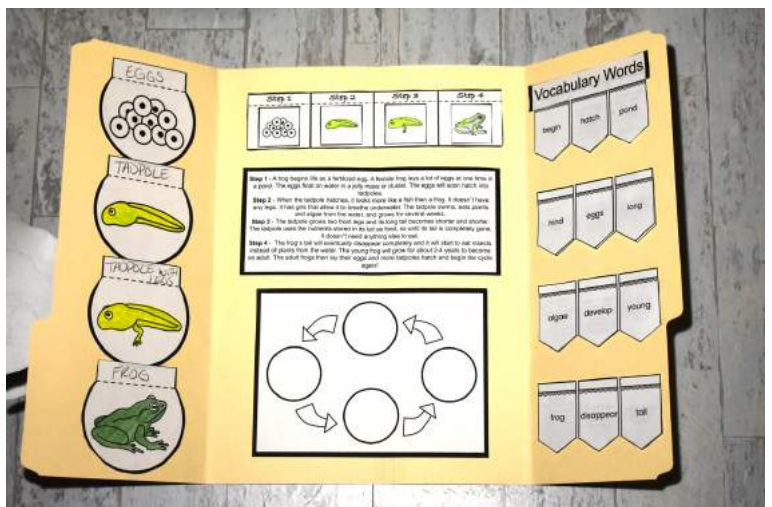
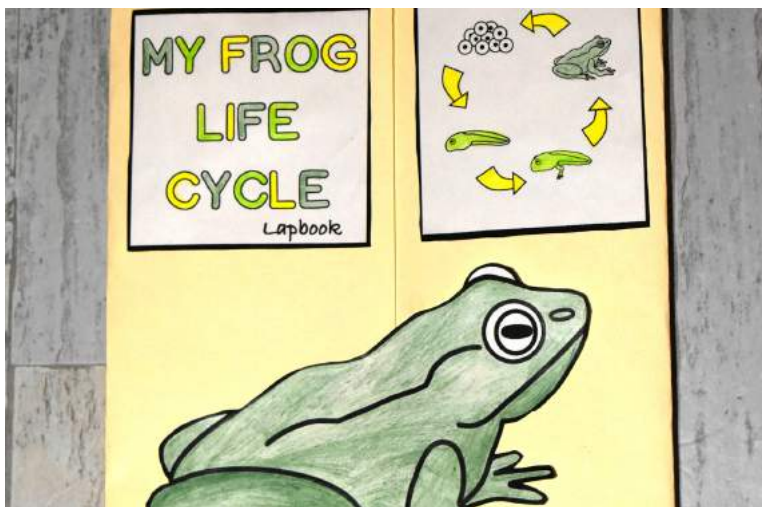
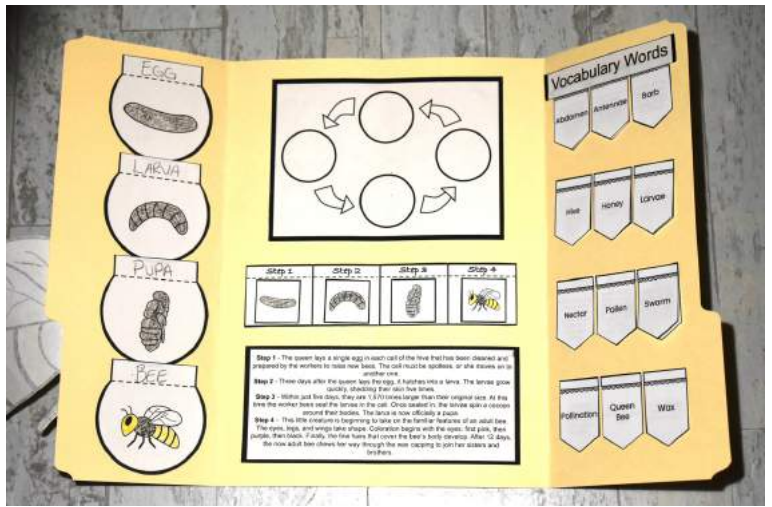
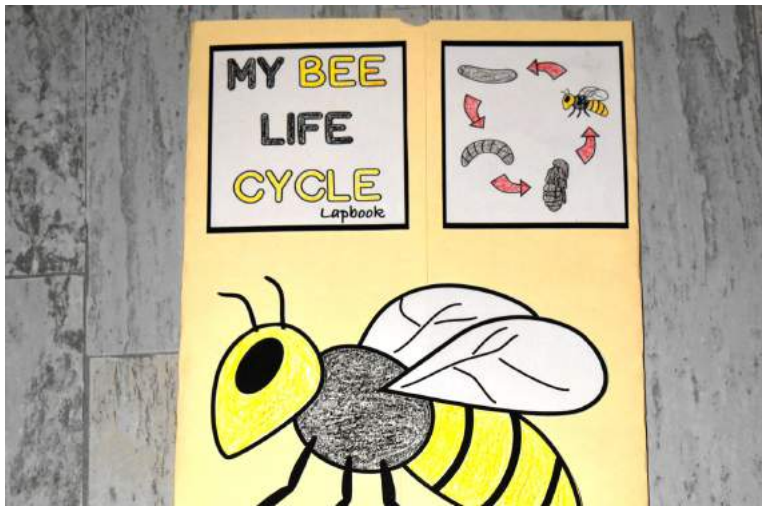
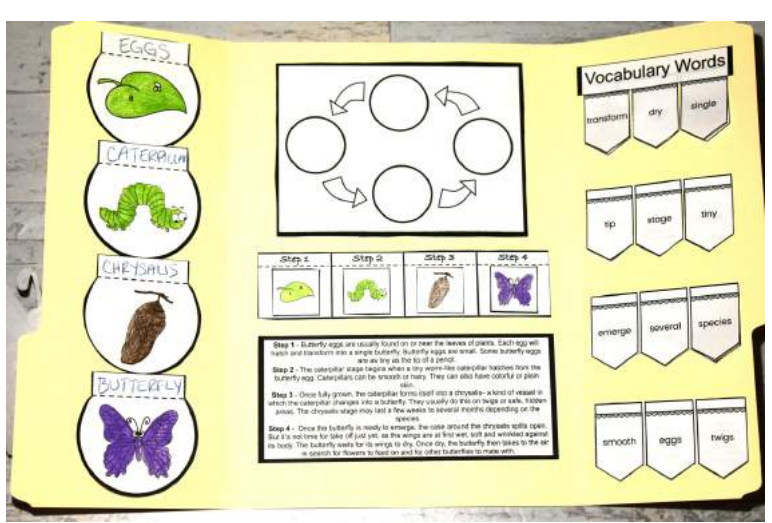
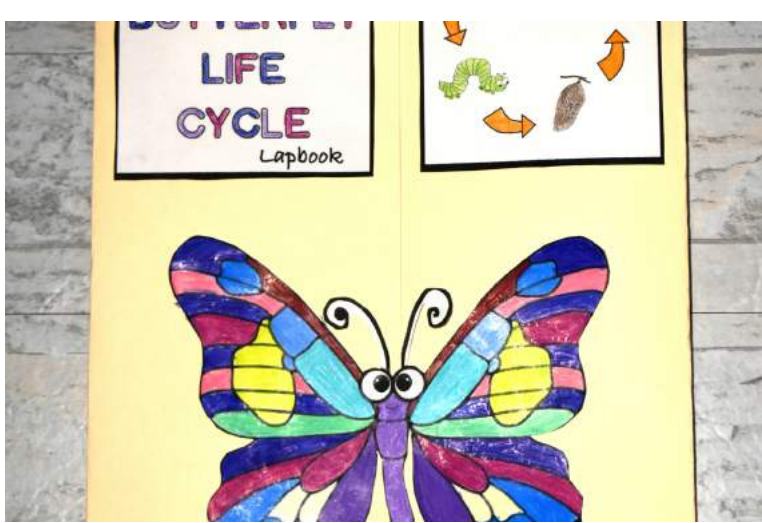
Cut out the square with the blank life cycle and glue it in the desired area in the center of the lapbook. Have your students draw the life cycle steps in each circle in the correct order.

Steps 1-4 Square

Cut out the square with the Steps 1-4. Have your students glue it to their lapbook. Then, color and cut out the individual squares with each step of the life cycle. Have your students glue the correct steps in order from Step 1 to Step 4.

[For more fun Spring STEM Activities click here.](#)



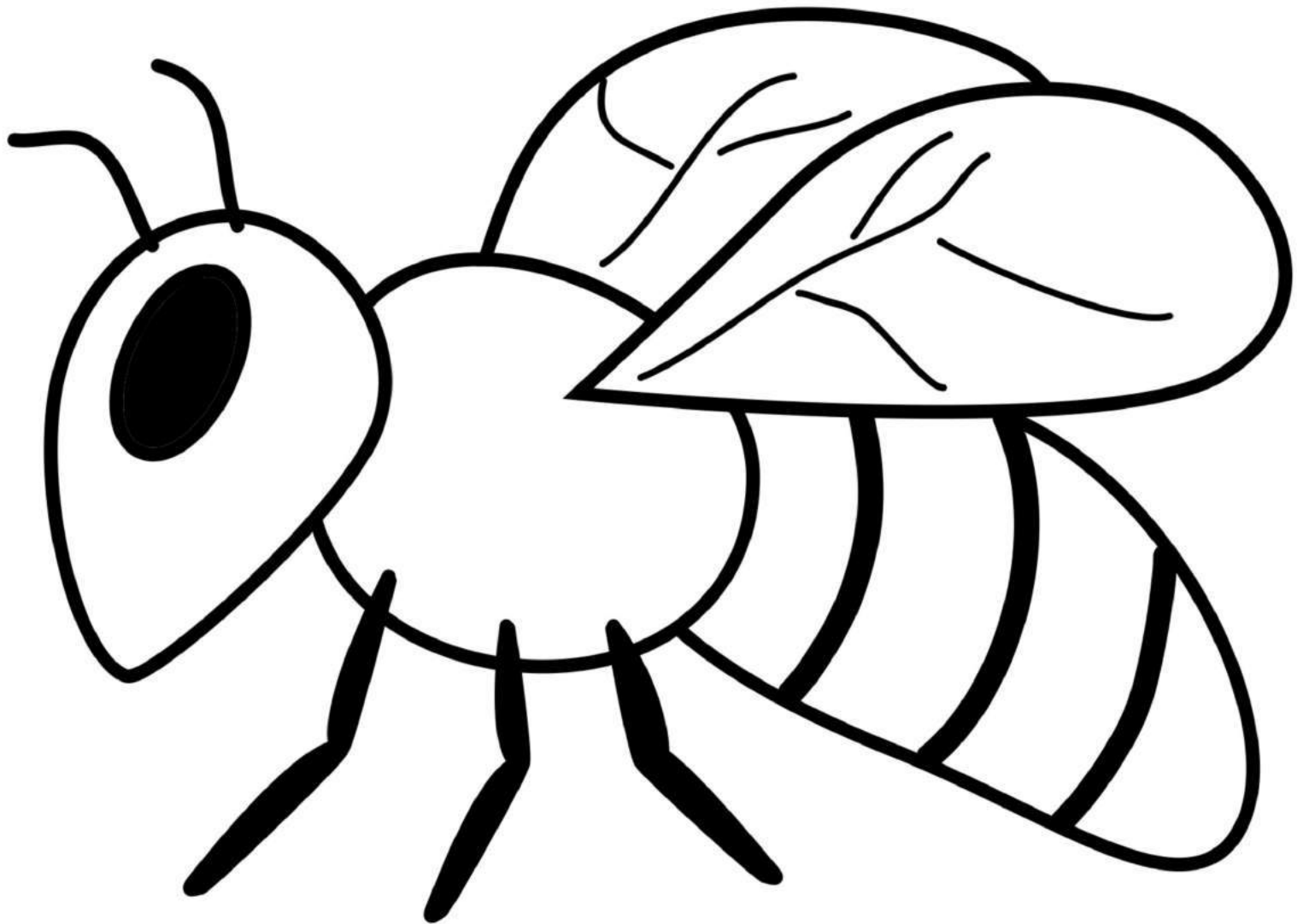
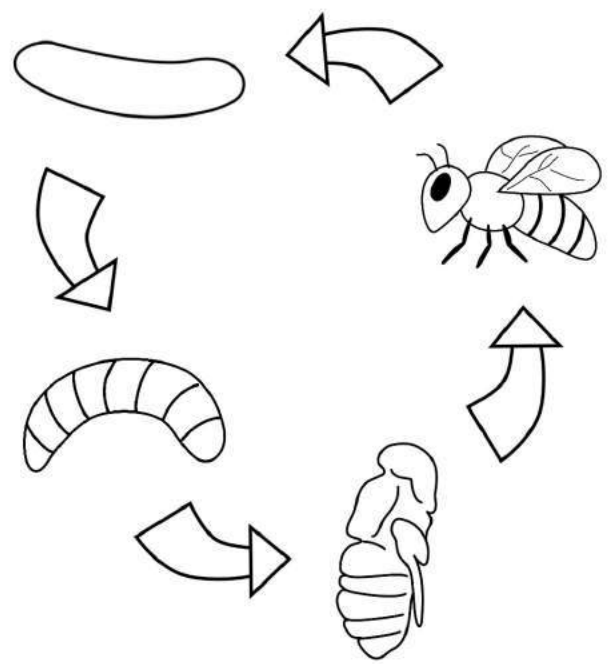


MY BEE

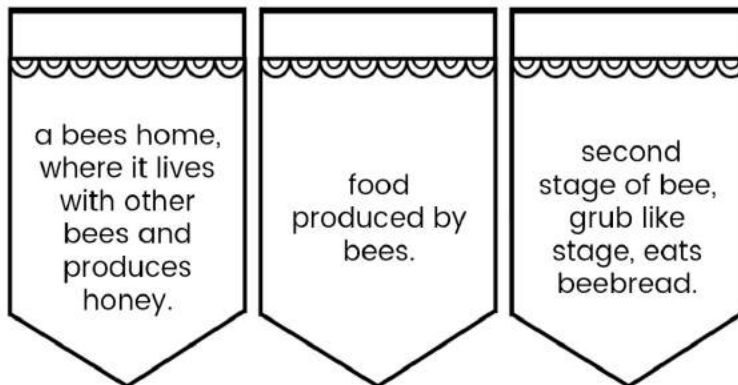
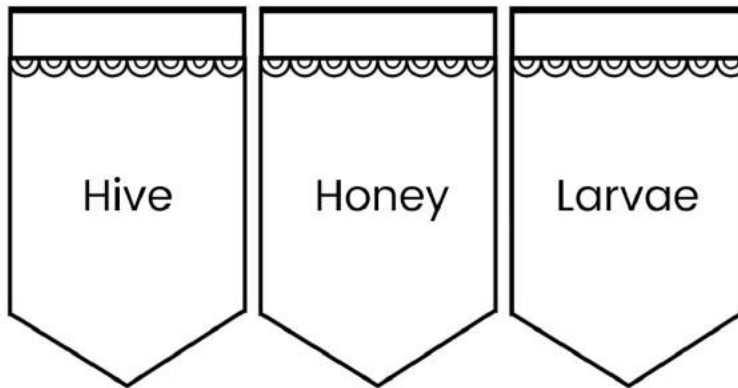
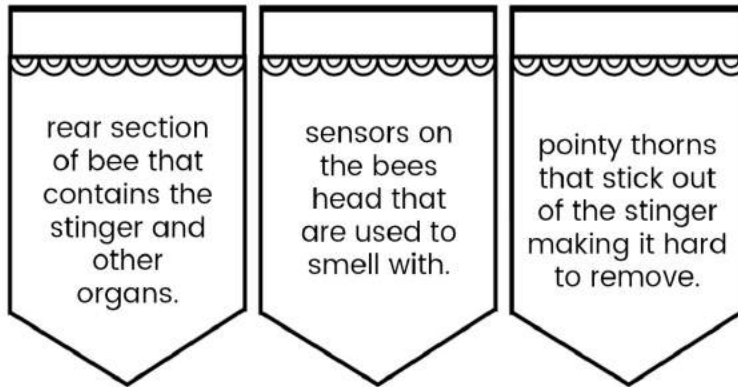
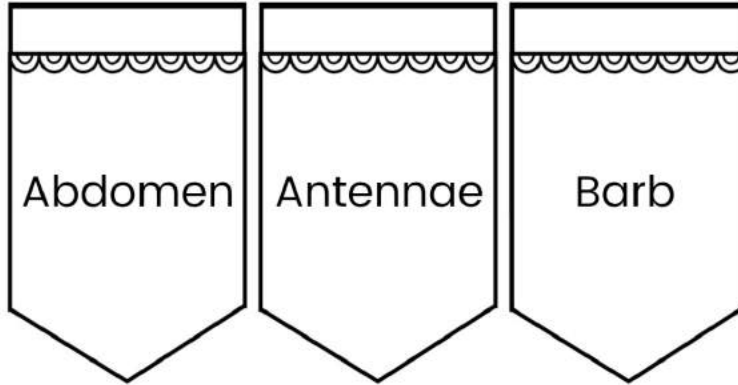
LIFE

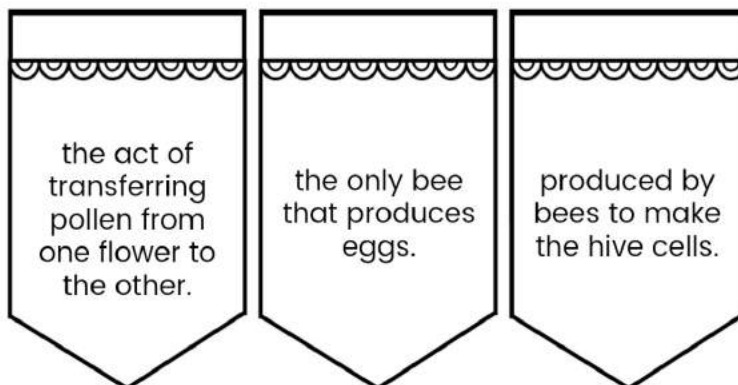
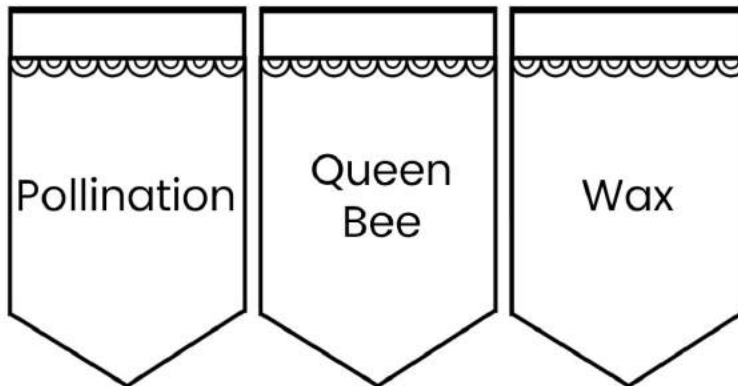
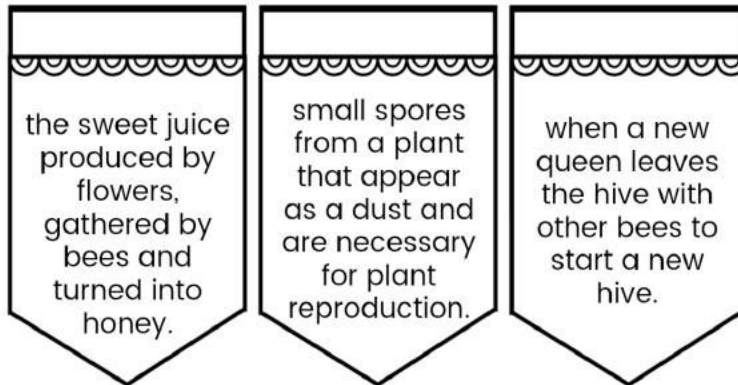
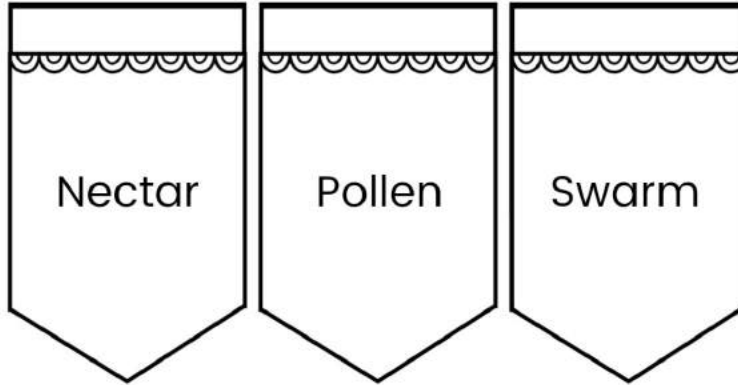
CYCLE

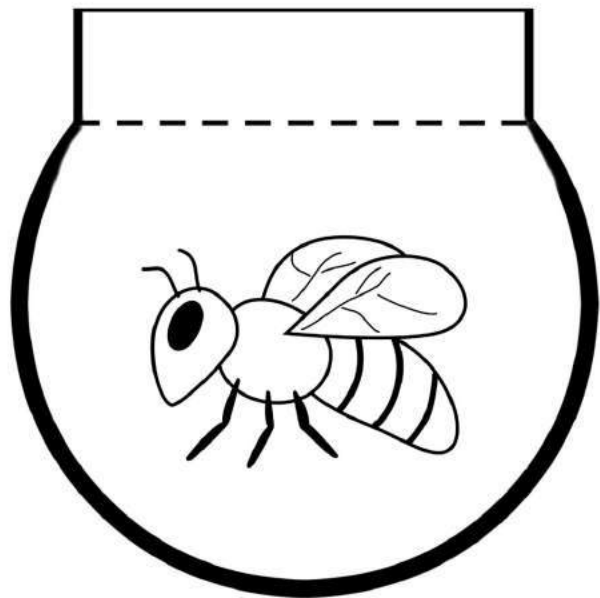
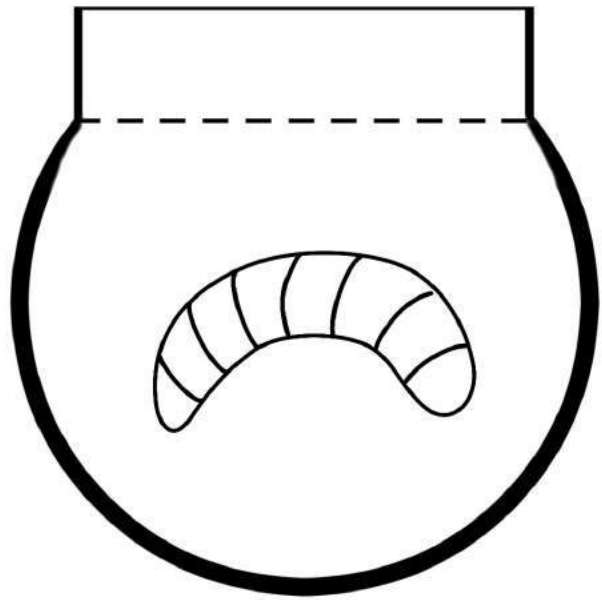
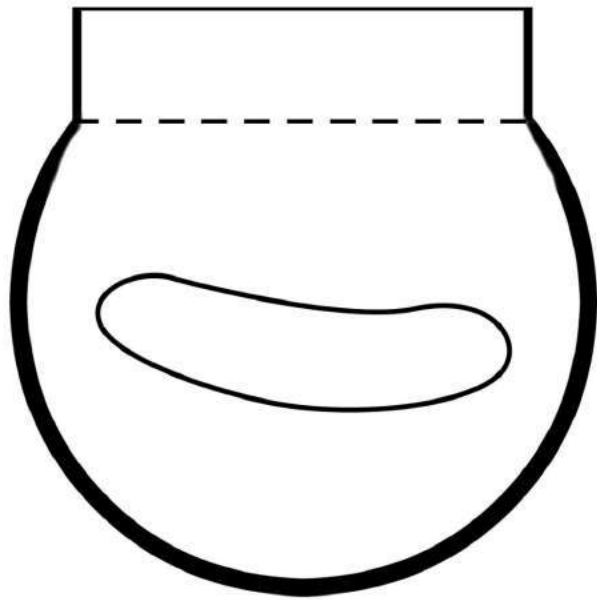
Lapbook



Vocabulary Words

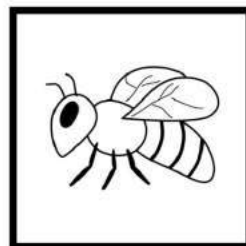
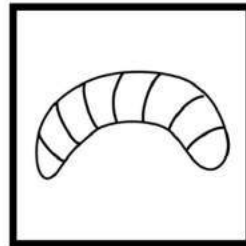
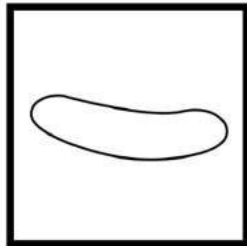




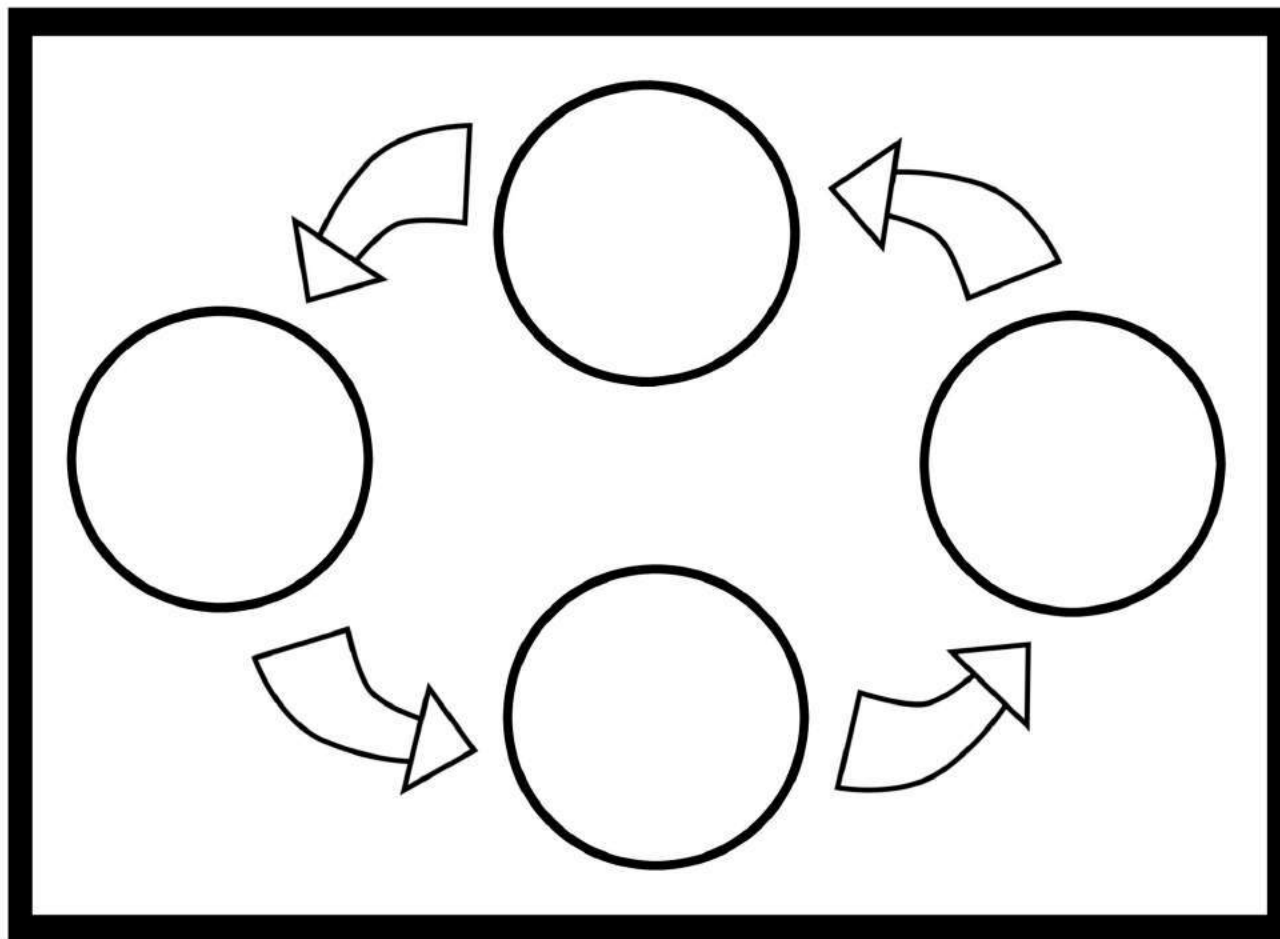


Step 1	Step 2	Step 3	Step 4

Cut the bar above with Step 1-4 and the boxes below. Glue the bar with boxes Step 1-4 in the lapbook. Students cut the bee life cycle boxes below and paste them in the correct order on their lapbook in the boxes above.



Students draw the bee life cycle in the cycle chart below.



Step 1 - The queen lays a single egg in each cell of the hive that has been cleaned and prepared by the workers to raise new bees. The cell must be spotless, or she moves on to another one.

Step 2 - Three days after the queen lays the egg, it hatches into a larva. The larvae grow quickly, shedding their skin five times.

Step 3 - Within just five days, they are 1,570 times larger than their original size. At this time the worker bees seal the larvae in the cell. Once sealed in, the larvae spin a cocoon around their bodies. The larva is now officially a pupa.

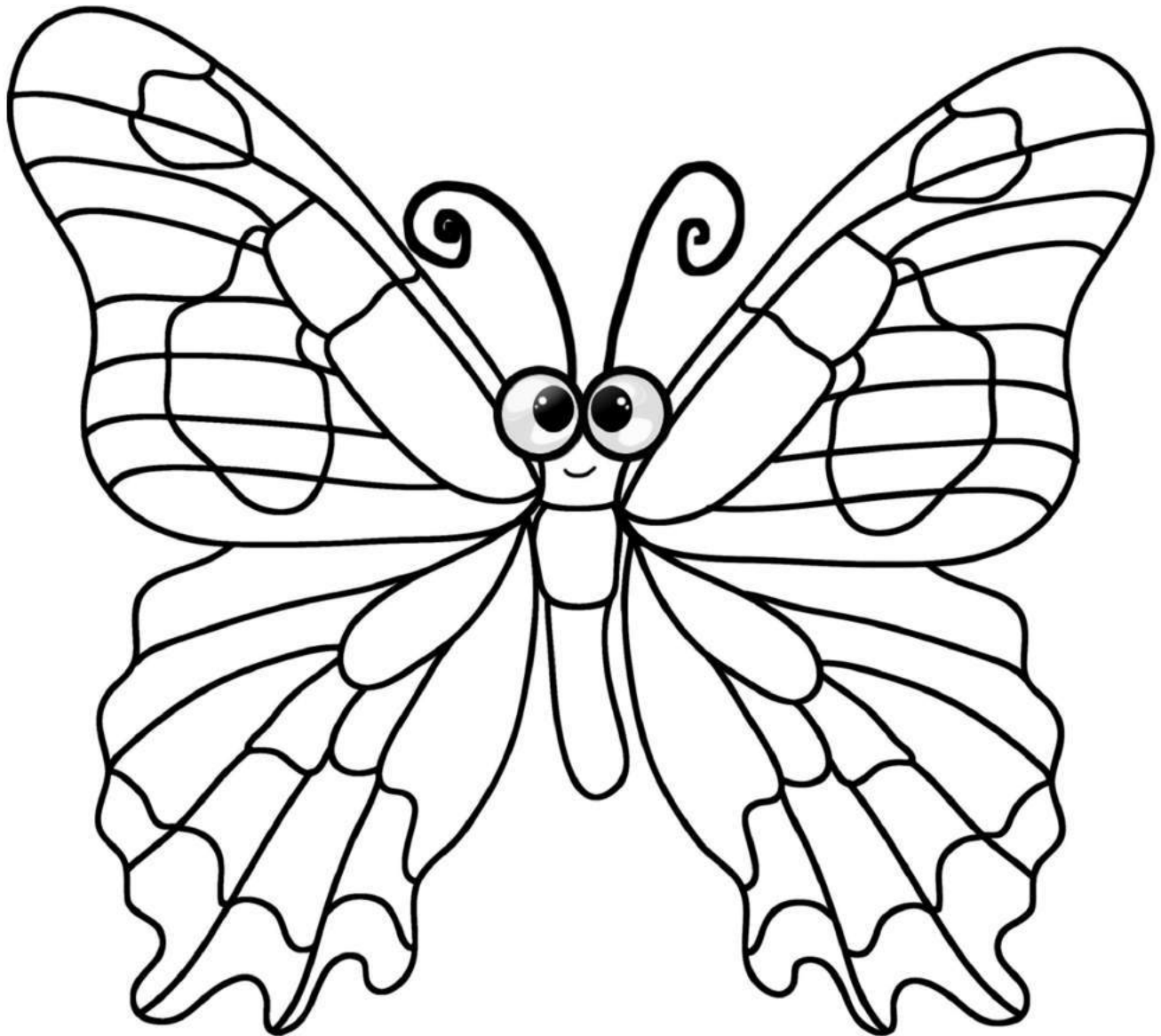
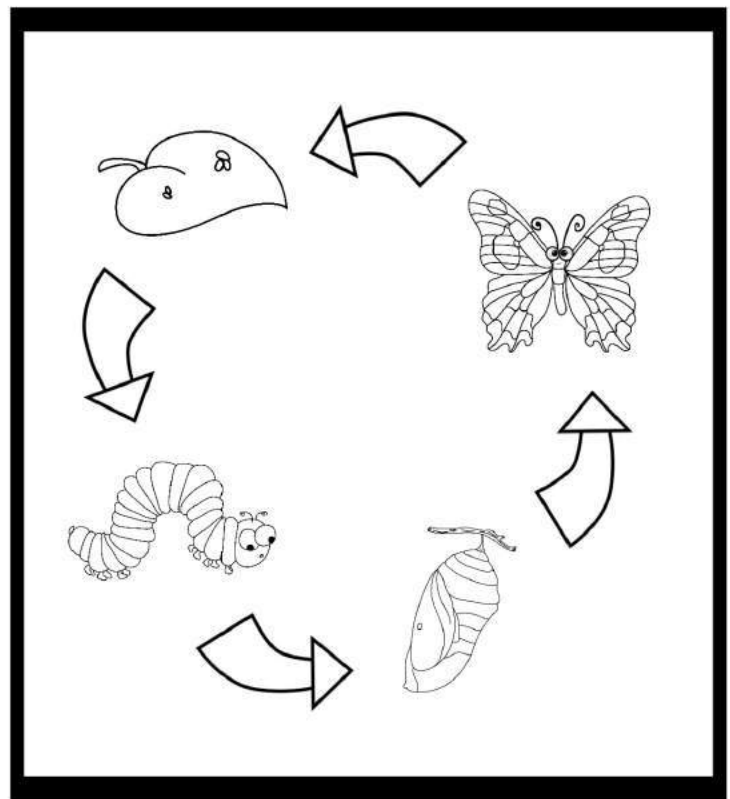
Step 4 - This little creature is beginning to take on the familiar features of an adult bee. The eyes, legs, and wings take shape. Coloration begins with the eyes: first pink, then purple, then black. Finally, the fine hairs that cover the bee's body develop. After 12 days, the now adult bee chews her way through the wax capping to join her sisters and brothers.

Thank you for downloading!

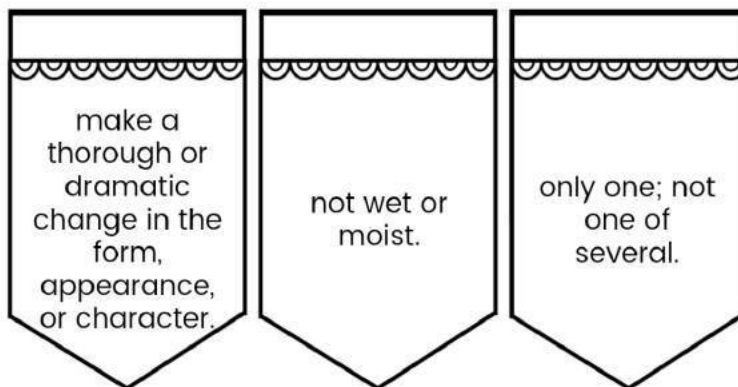
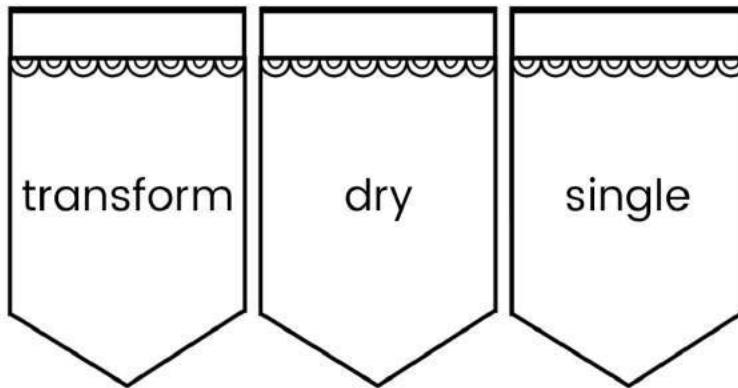
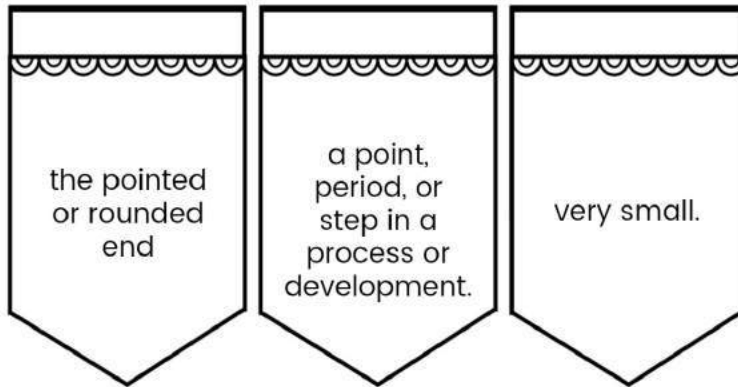
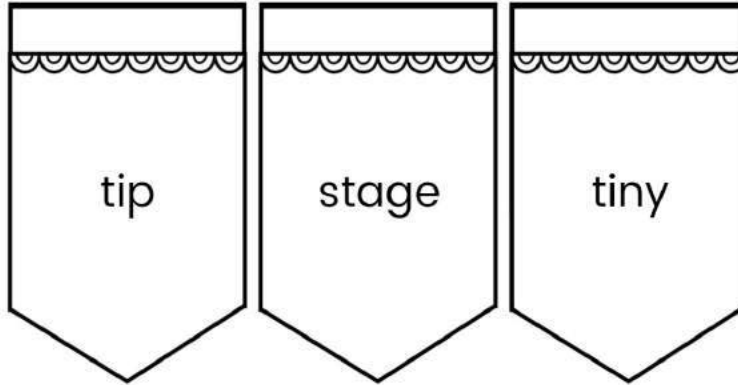
Graphic Credit goes to:

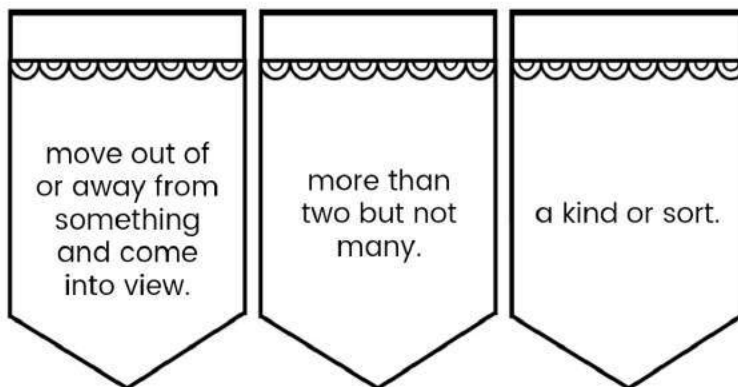
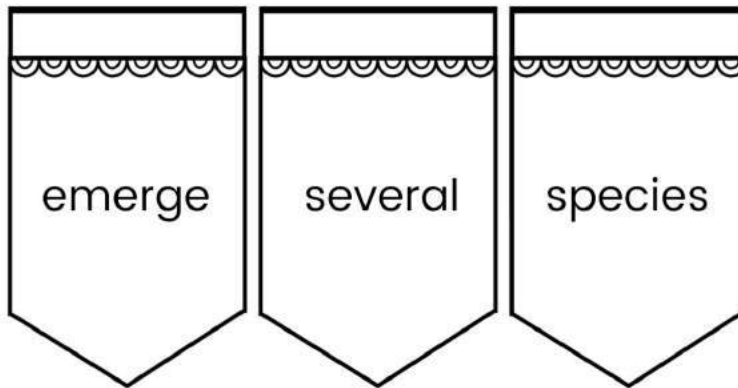
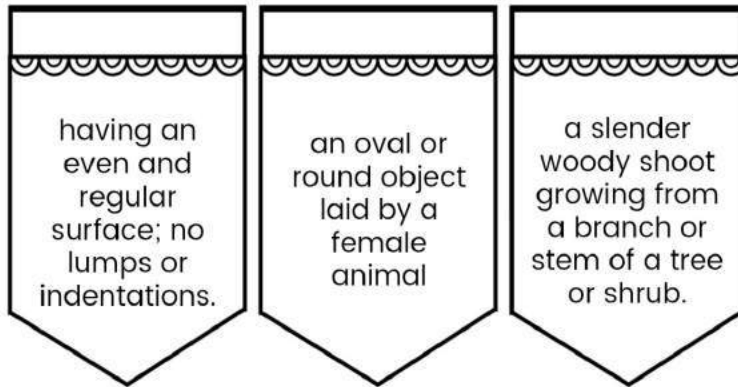
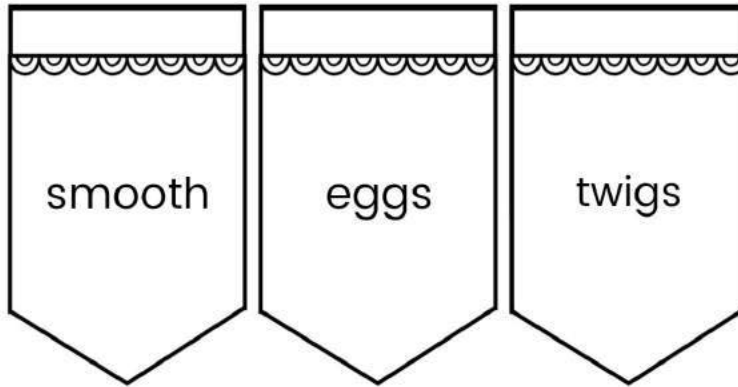


MY
BUTTERFLY
LIFE
CYCLE
Lapbook

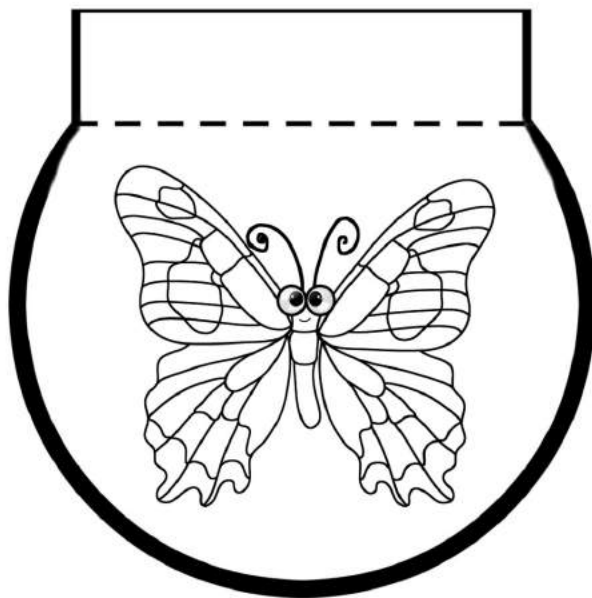
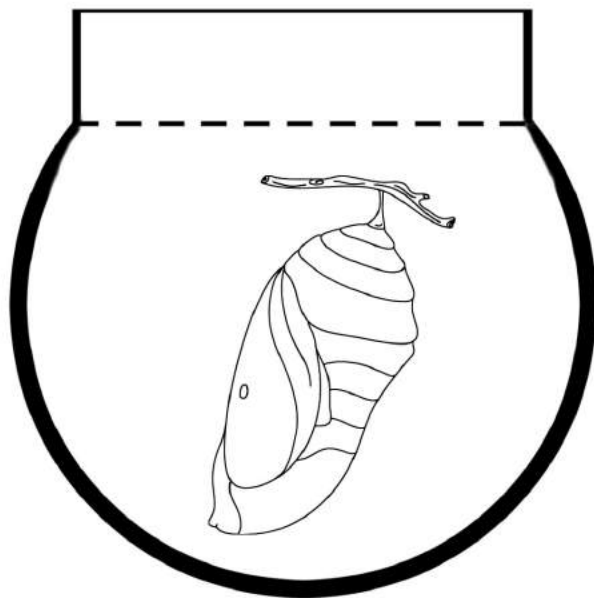
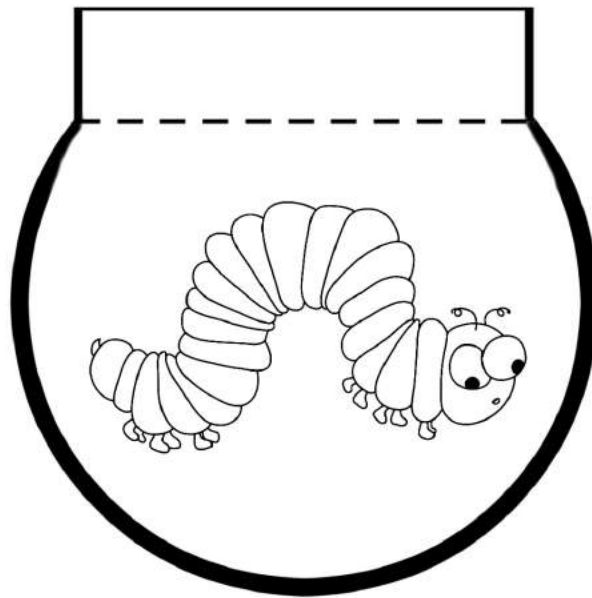
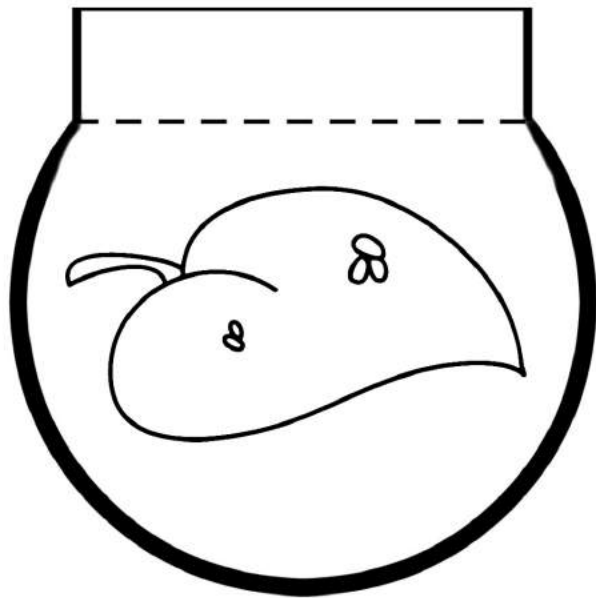


Vocabulary Words



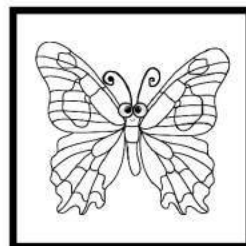
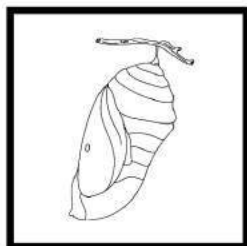
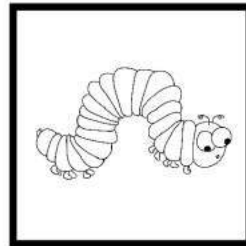
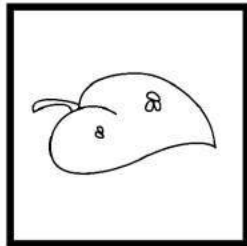


Have students cut out, color, glue and label each in their lapbook.

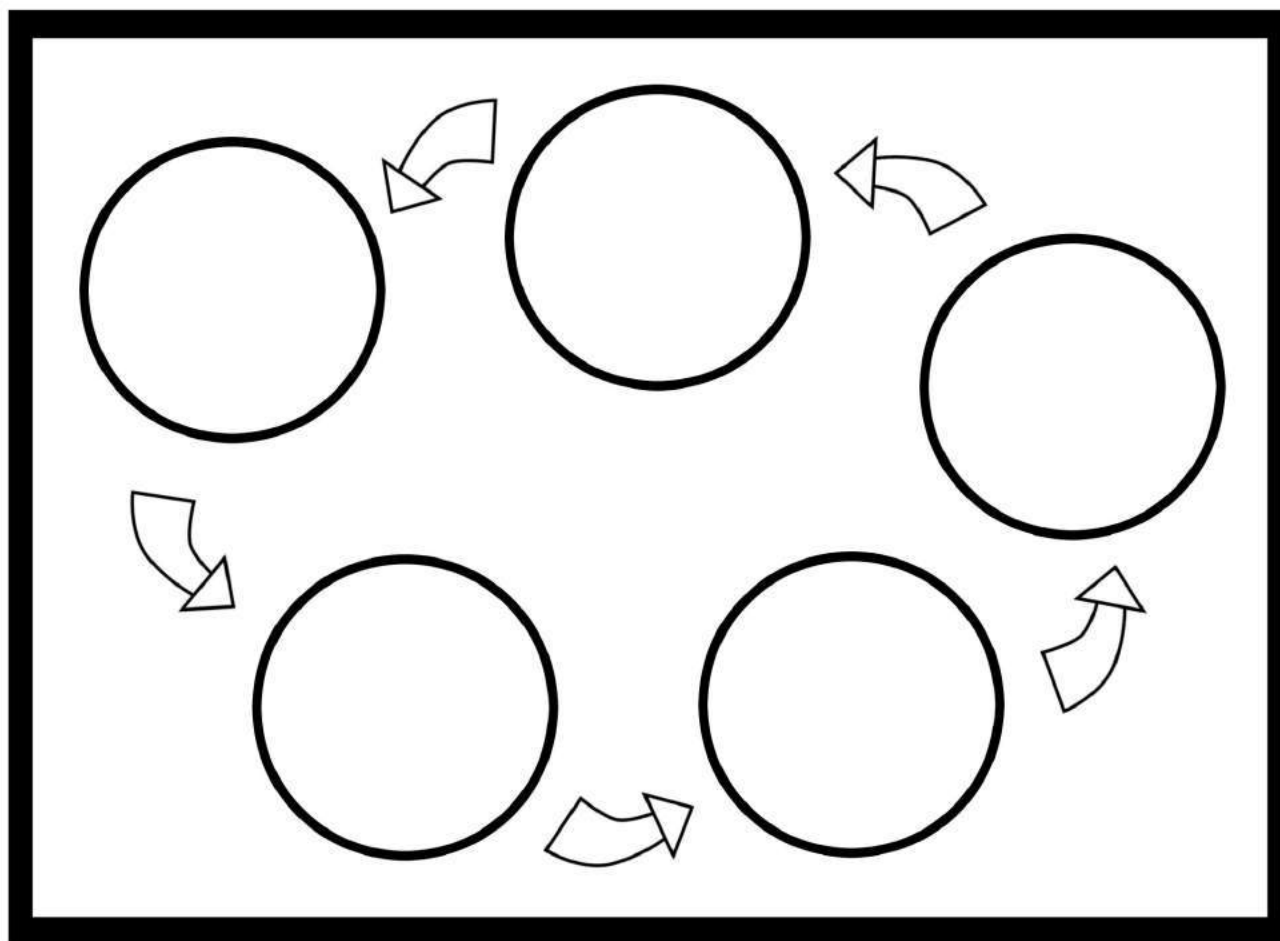


Step 1	Step 2	Step 3	Step 4

Cut the bar above with Step 1-4 and the boxes below. Glue the bar with boxes Step 1-4 in the lapbook. Students cut the Butterfly life cycle boxes below and paste them in the correct order on their lapbook in the boxes above.



Students draw the butterfly life cycle in the cycle chart below.



Step 1 - Butterfly eggs are usually found on or near the leaves of plants. Each egg will hatch and transform into a single butterfly. Butterfly eggs are small. Some butterfly eggs are as tiny as the tip of a pencil.

Step 2 - The caterpillar stage begins when a tiny worm-like caterpillar hatches from the butterfly egg. Caterpillars can be smooth or hairy. They can also have colorful or plain skin.

Step 3 - Once fully grown, the caterpillar forms itself into a chrysalis— a kind of vessel in which the caterpillar changes into a butterfly. They usually do this on twigs or safe, hidden areas. The chrysalis stage may last a few weeks to several months depending on the species.

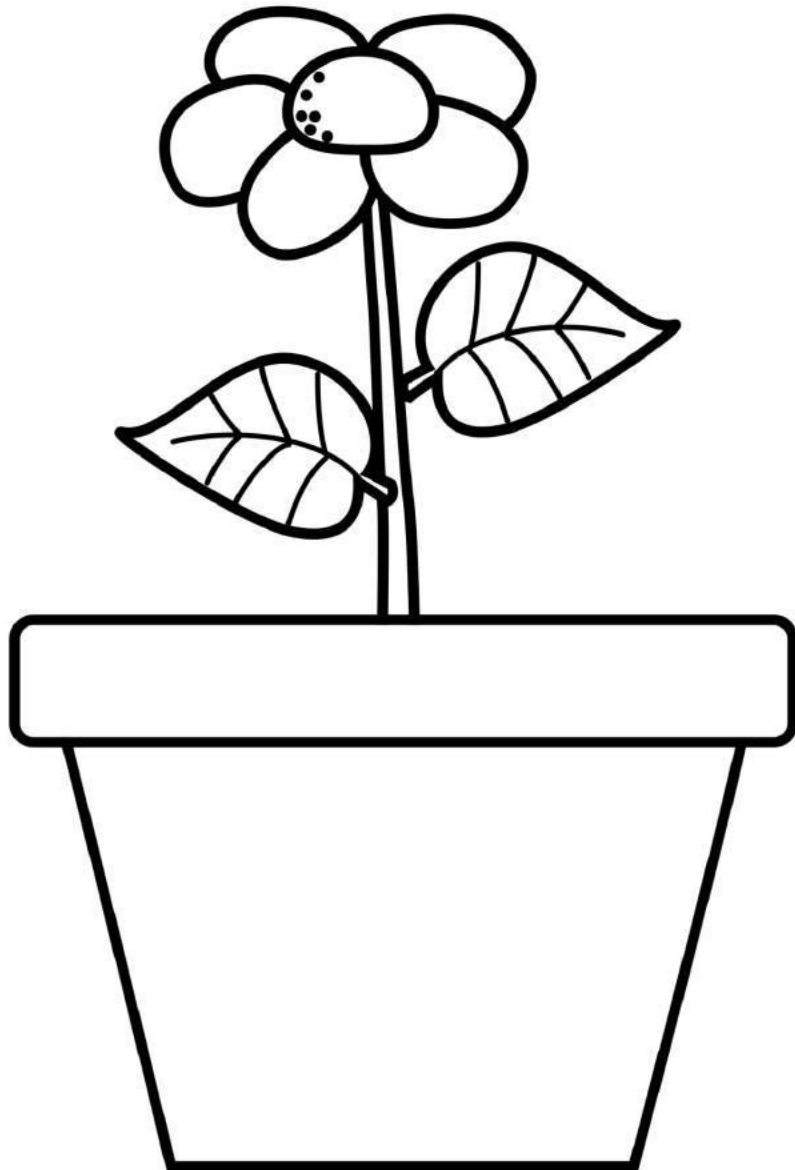
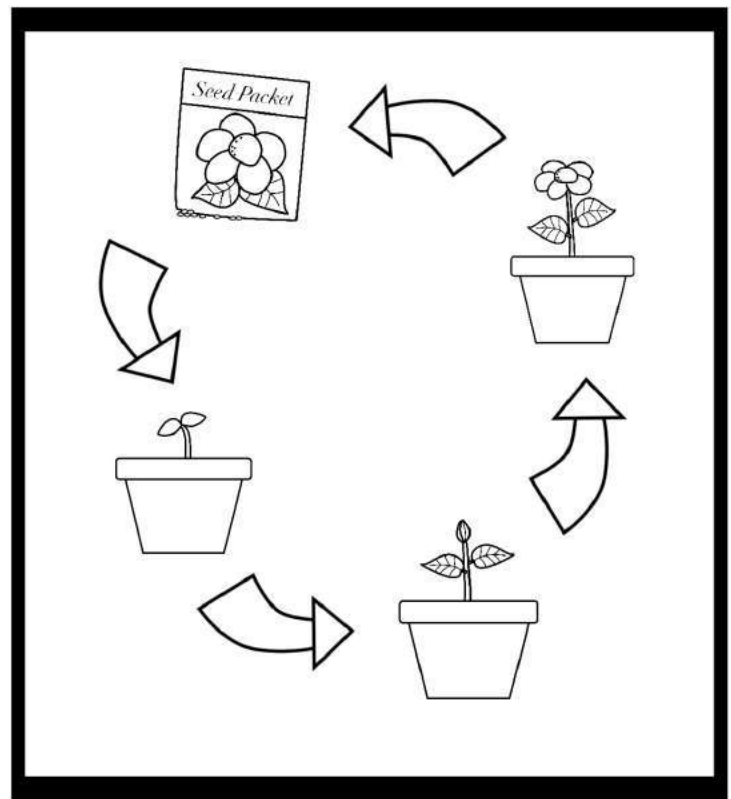
Step 4 - Once the butterfly is ready to emerge, the case around the chrysalis splits open. But it's not time for take off just yet, as the wings are at first wet, soft and wrinkled against its body. The butterfly waits for its wings to dry. Once dry, the butterfly then takes to the air in search for flowers to feed on and for other butterflies to mate with.

Thank you for downloading!

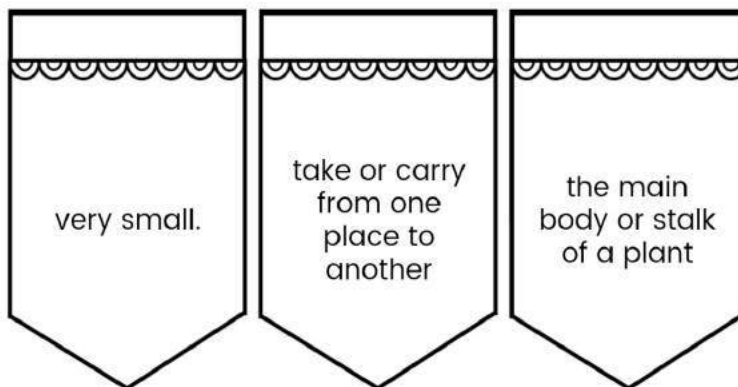
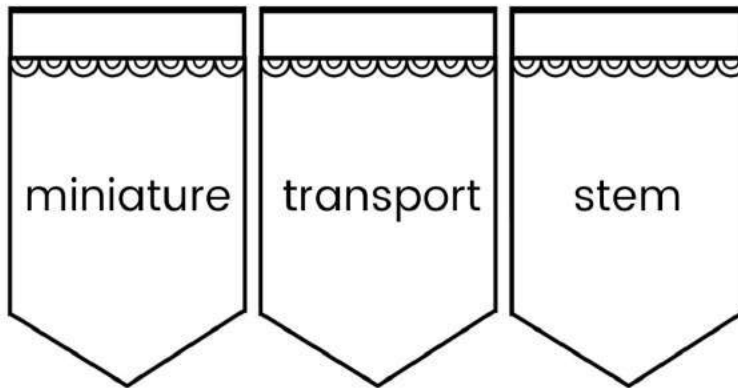
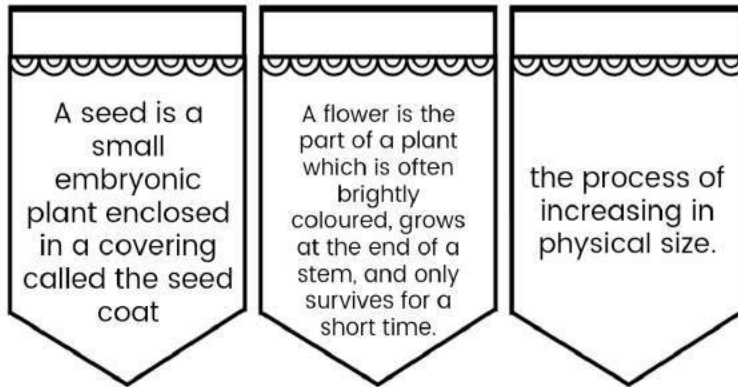
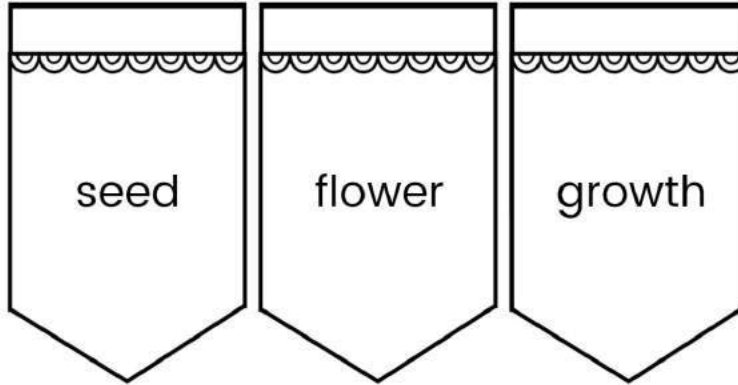
Graphic Credit goes to:

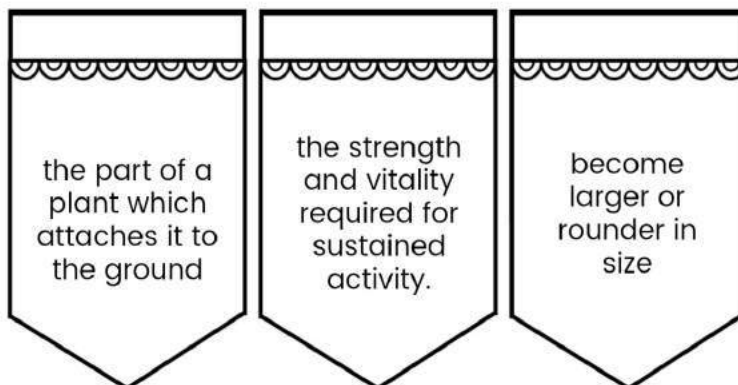
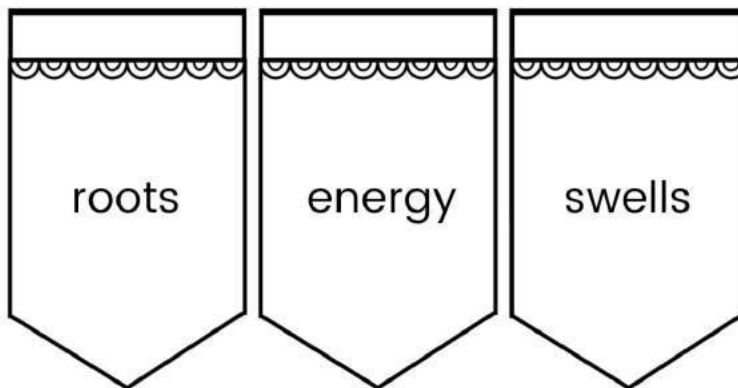
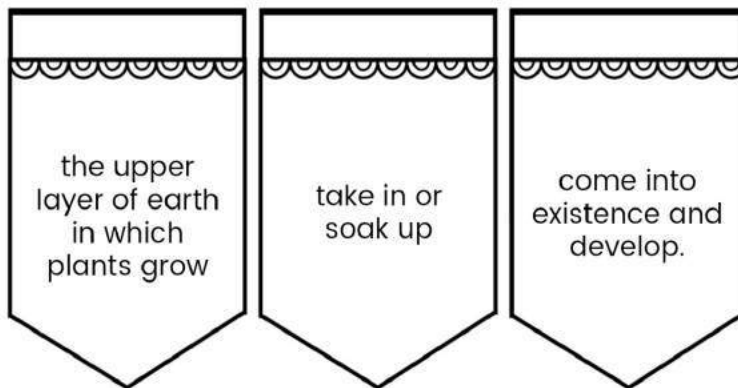
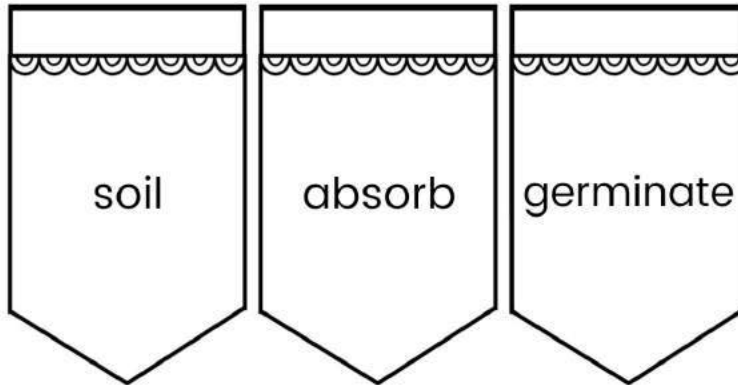


MY
FLOWER
LIFE
CYCLE
Lapbook

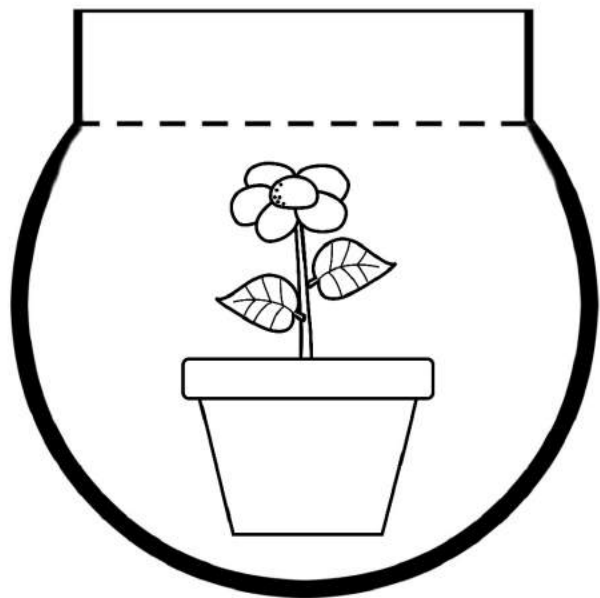
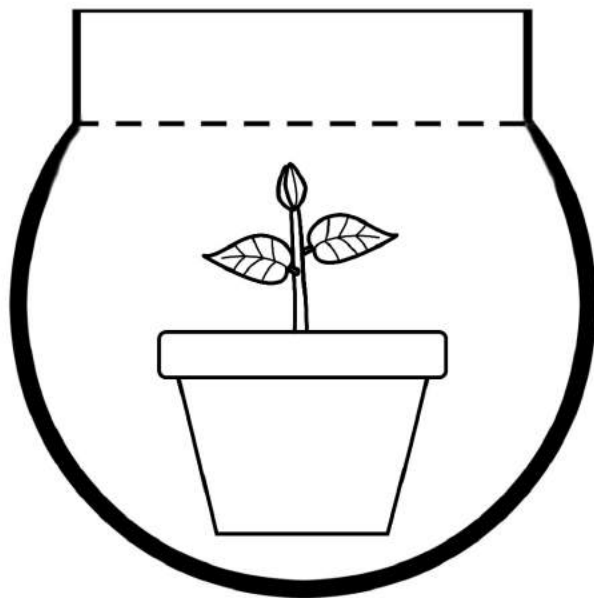
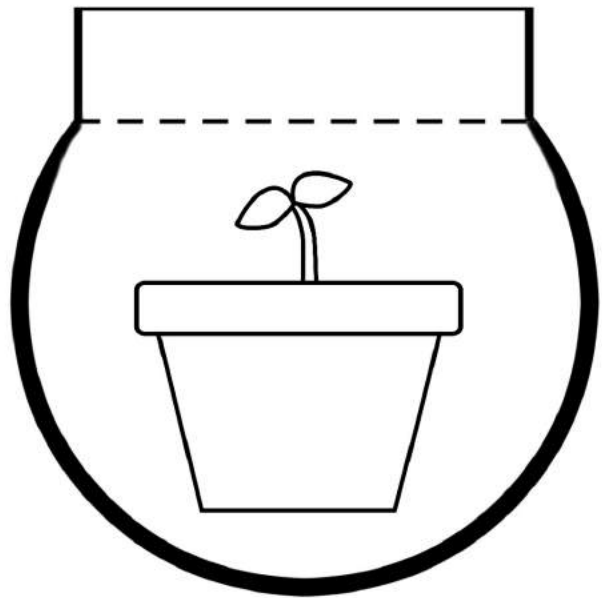
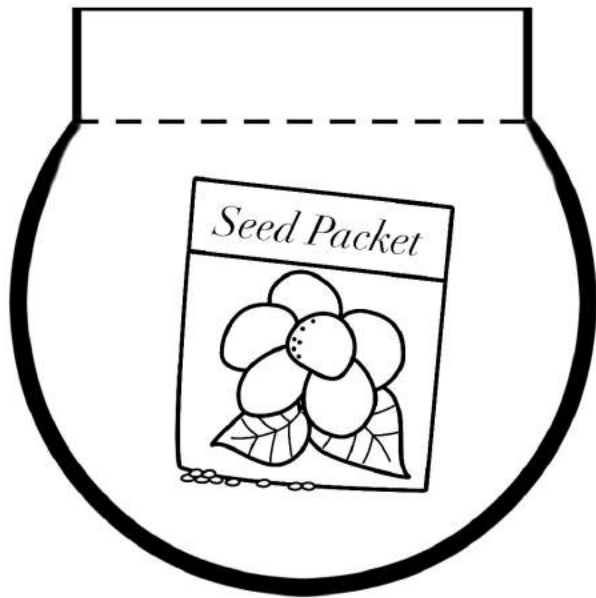


Vocabulary Words



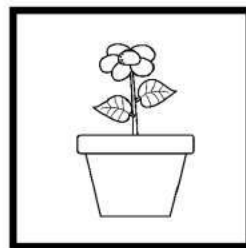
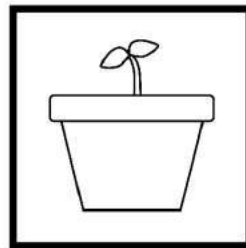
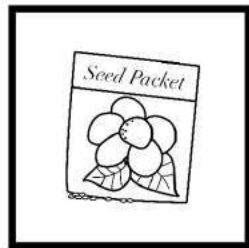


Have students cut out, color, glue and label each in their lapbook.

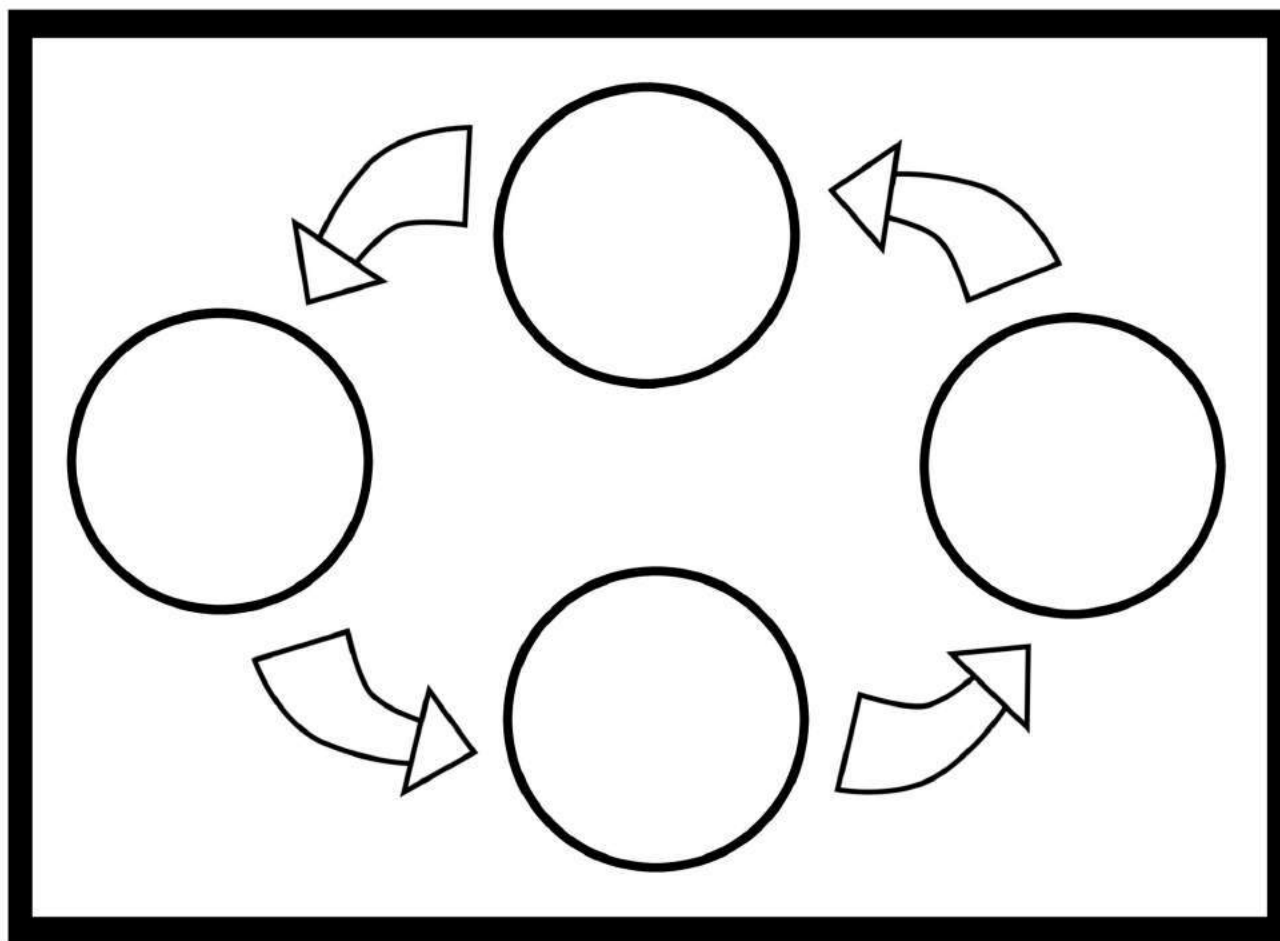


Step 1	Step 2	Step 3	Step 4

Cut the bar above with Step 1-4 and the boxes below. Glue the bar with boxes Step 1-4 in the lapbook. Students cut the flower life cycle boxes below and paste them in the correct order on their lapbook in the boxes above.



Students draw the flower life cycle in the cycle chart below.



Step 1 - The plant life cycle starts with a seed; every seed holds a miniature plant called the embryo. When a seed falls on the ground, it needs warmth and water in order to germinate; some seeds also need light. After being planted in the soil for a few days, the seed absorbs water and swells until the seed coat splits.

Step 2 - Plants have to produce their own food. This process is called photosynthesis. As soon as the leaves emerge, they start the process of photosynthesis. The plants store sugars in the roots and stem.

Step 3 - The stem grows longer towards the sun and transports water and food between the roots and leaves. Sugars and starches are changed into energy used to make new plant growth. New leaves grow from the top of the stem, or meristem.

Step 4 - After a while, flower buds develop. Some plants flower within days while it takes others months or even years.

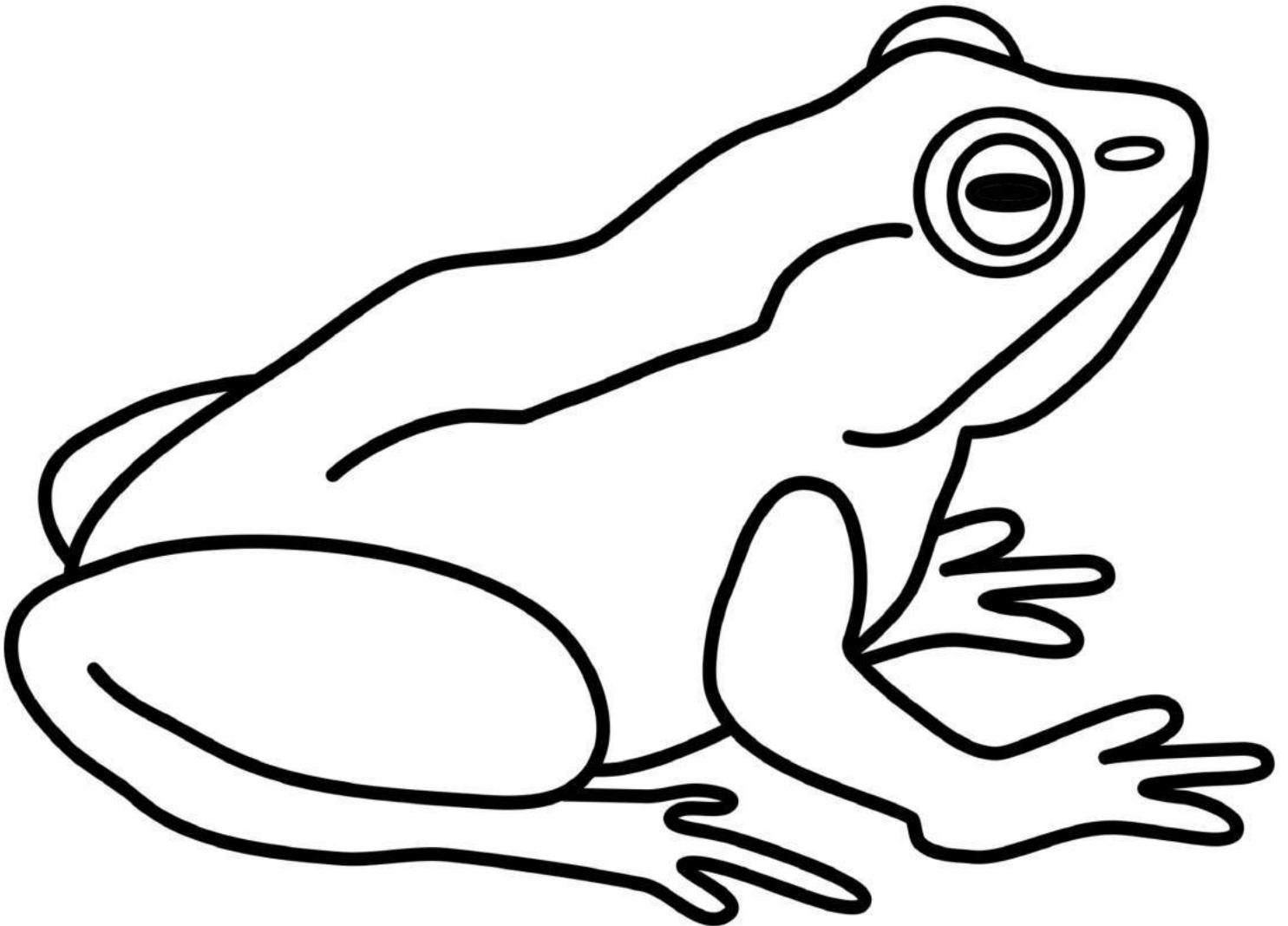
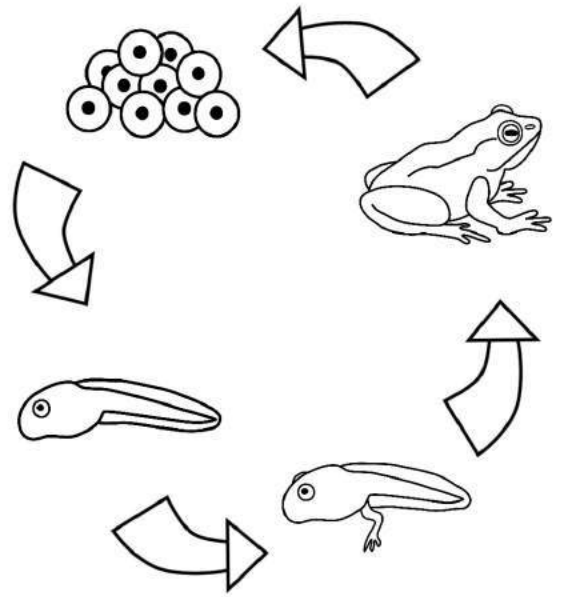
Thank you for downloading!

Graphic Credit goes to:

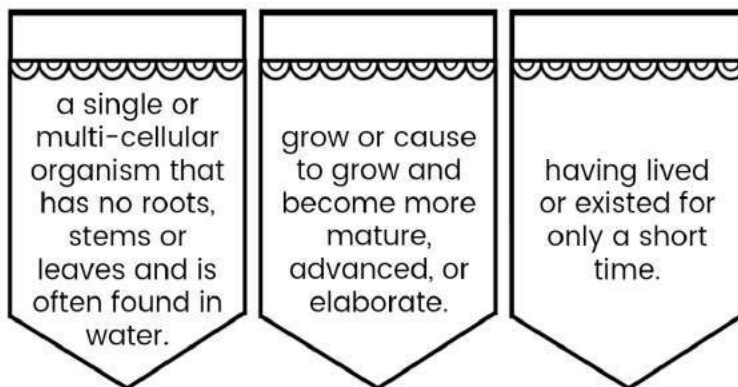
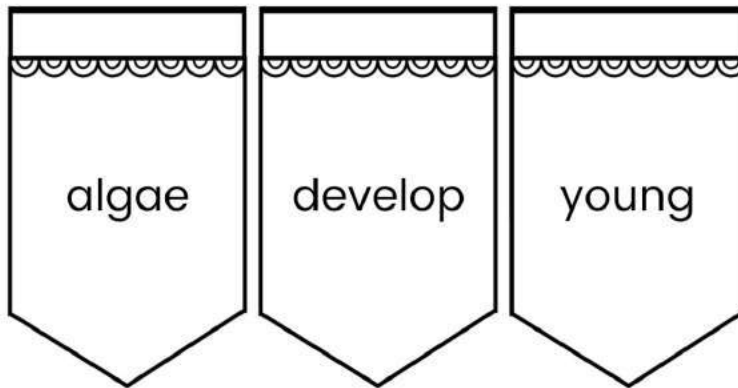
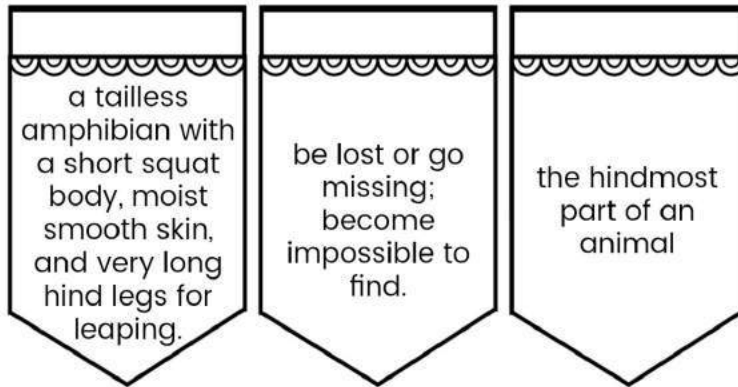
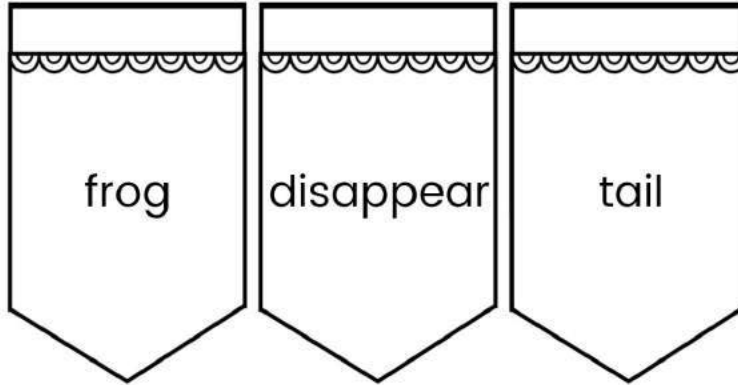


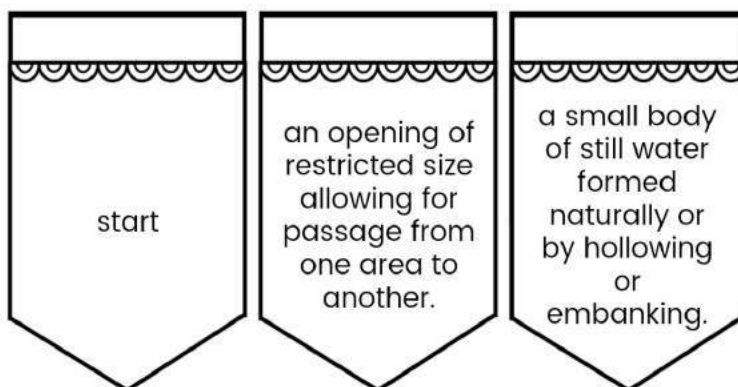
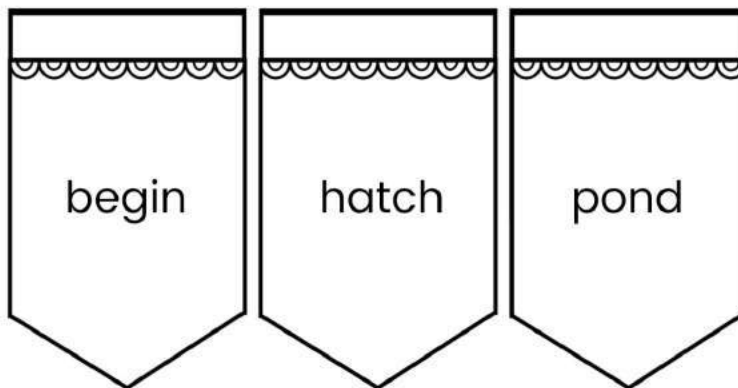
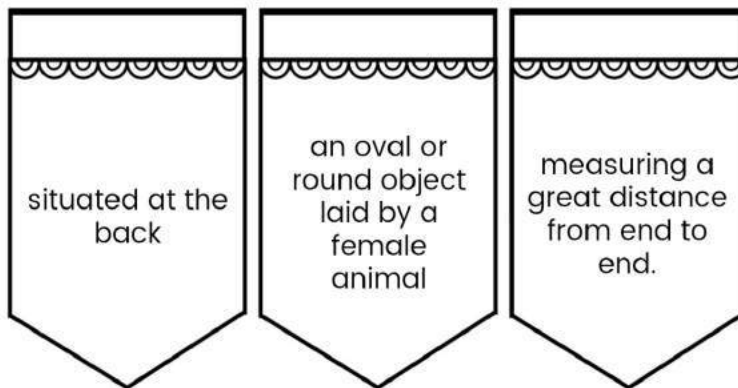
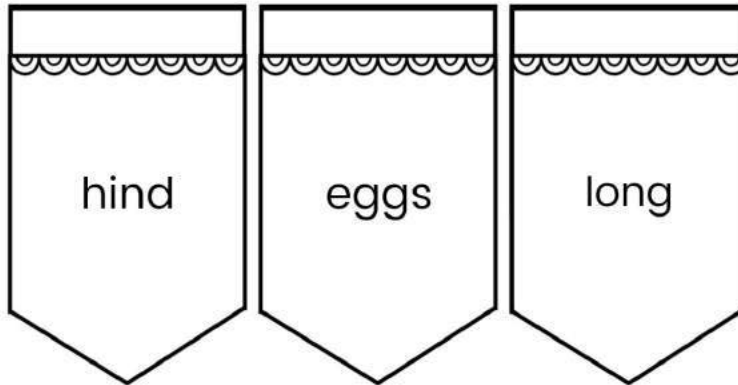
MY FROG LIFE CYCLE

Lapbook

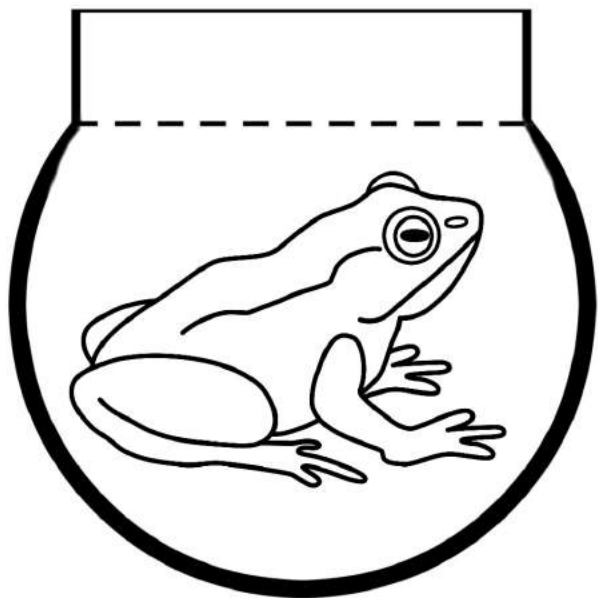
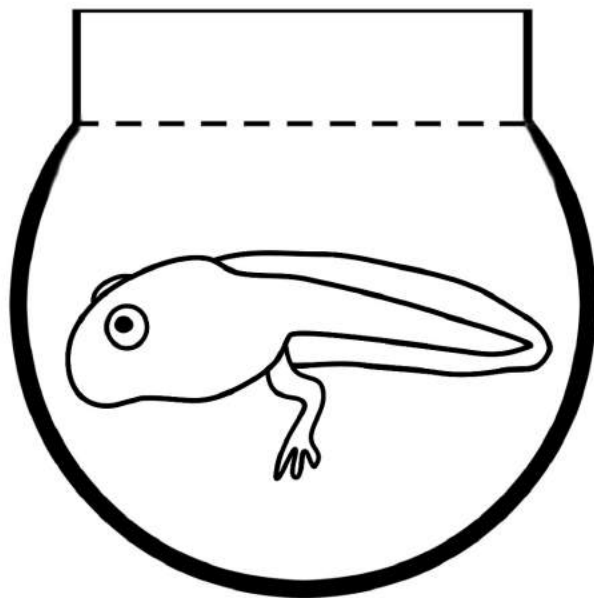
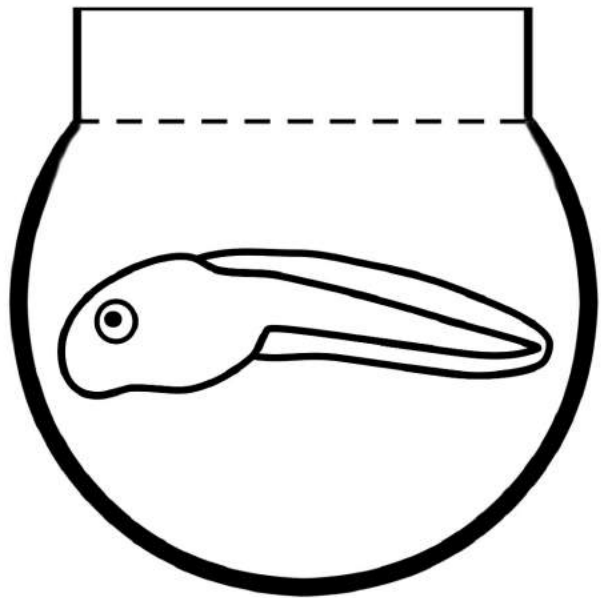
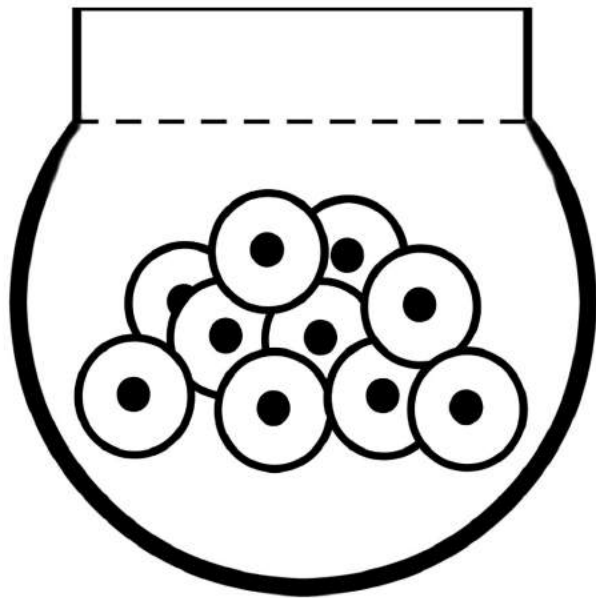


Vocabulary Words



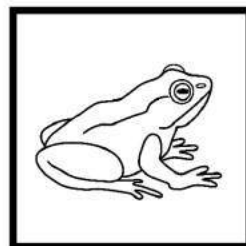
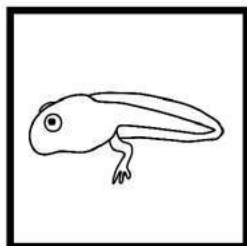
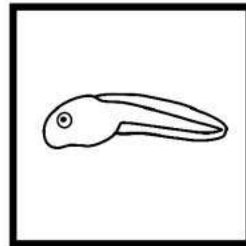
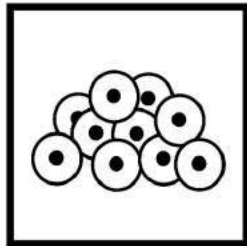


Have students cut out, color, glue and label each in their lapbook.

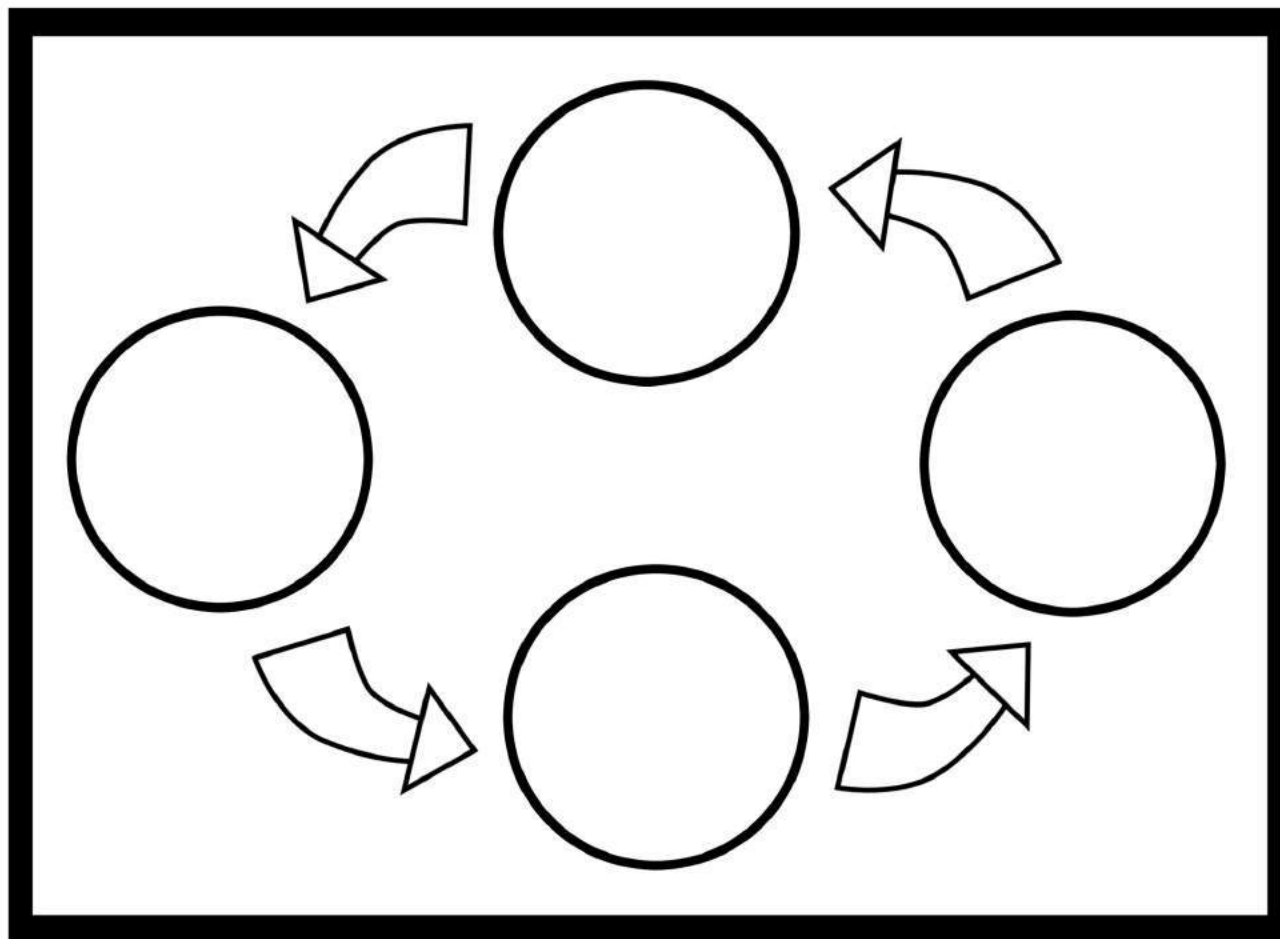


Step 1	Step 2	Step 3	Step 4

Cut the bar above with Step 1-4 and the boxes below. Glue the bar with boxes Step 1-4 in the lapbook. Students cut the frog life cycle boxes below and paste them in the correct order on their lapbook in the boxes above.



Students draw the frog life cycle in the cycle chart below.



Step 1 - A frog begins life as a fertilized egg. A female frog lays a lot of eggs at one time in a pond. The eggs float on water in a jelly mass or cluster. The eggs will soon hatch into tadpoles.

Step 2 - When the tadpole hatches, it looks more like a fish than a frog. It doesn't have any legs. It has gills that allow it to breathe underwater. The tadpole swims, eats plants and algae from the water, and grows for several weeks.

Step 3 - The tadpole grows two front legs and its long tail becomes shorter and shorter. The tadpole uses the nutrients stored in its tail as food, so until its tail is completely gone, it doesn't need anything else to eat.

Step 4 - The frog's tail will eventually disappear completely and it will start to eat insects instead of plants from the water. The young frog will grow for about 2-4 years to become an adult. The adult frogs then lay their eggs and more tadpoles hatch and begin the cycle again!

Thank you for downloading!

Graphic Credit goes to:

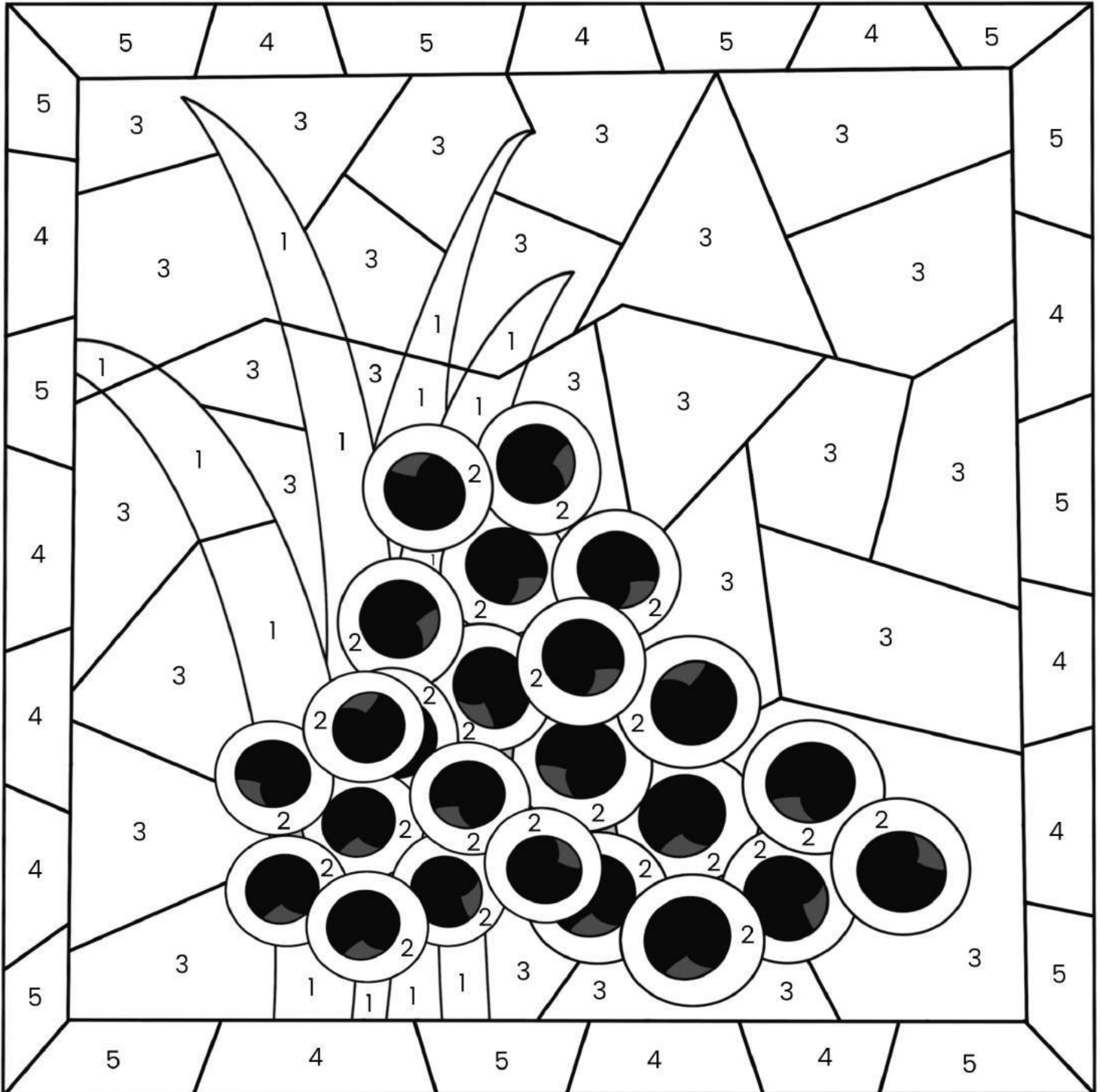


Color by Number

Directions: Color the picture according to the code below.

green - 1
light yellow - 2
light blue - 3

pink - 4
purple - 5

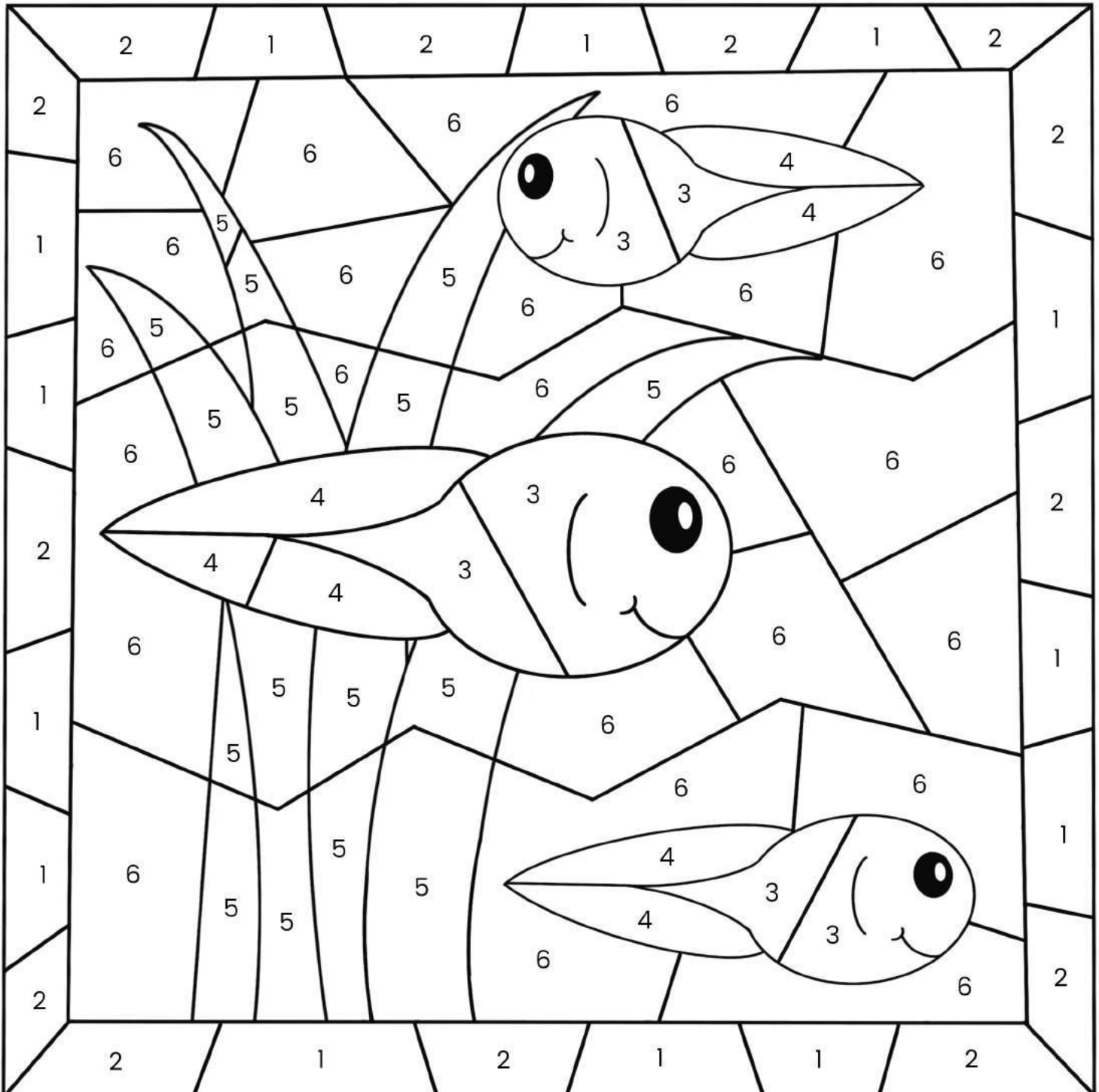


Color by Number

Directions: Color the picture according to the code below.

purple - 1
peach - 2
light green - 3

yellow - 4
green - 5
blue - 6

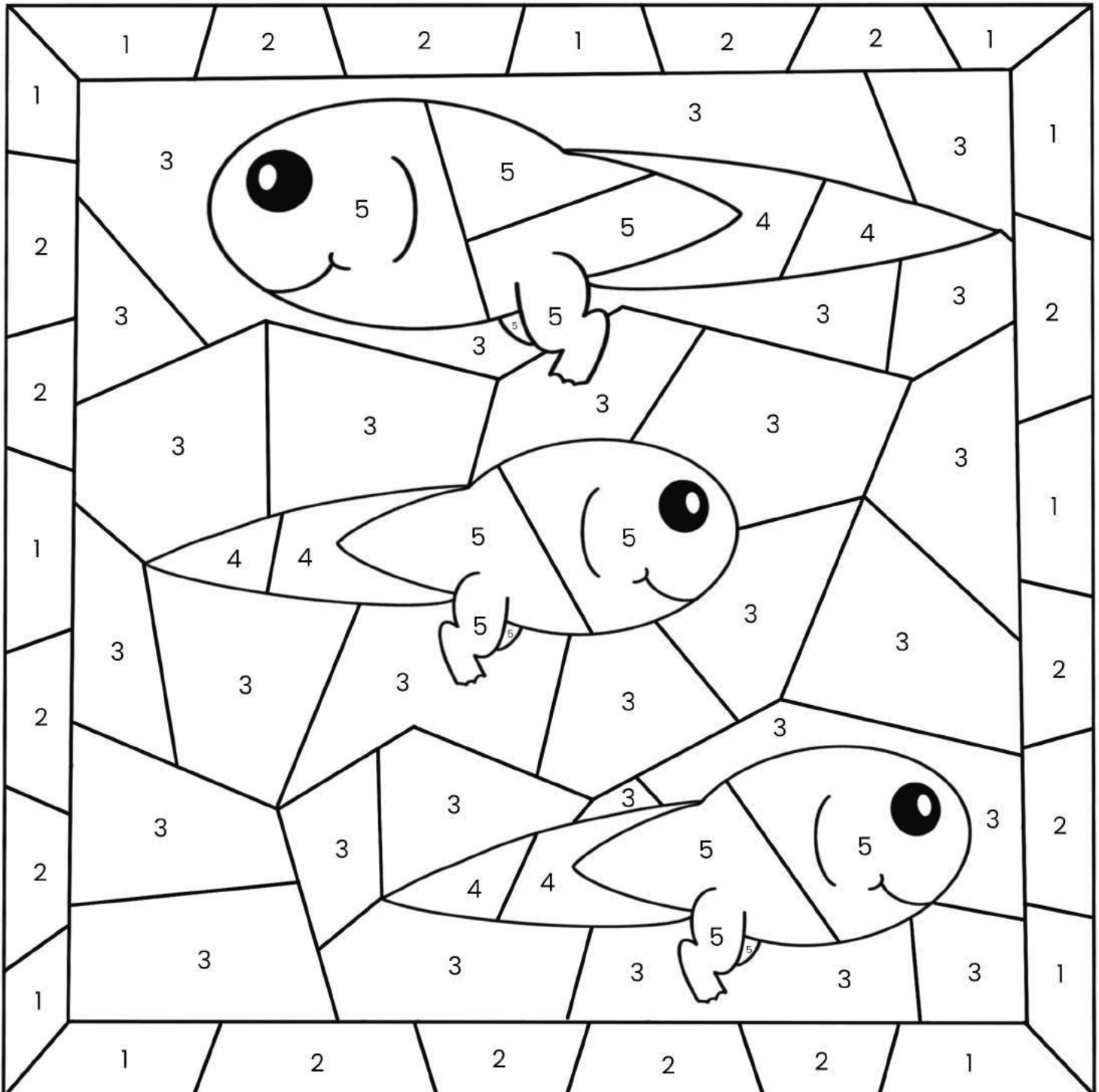


Color by Number

Directions: Color the picture according to the code below.

blue - 1
peach - 2
light blue - 3

yellow - 4
light green - 5

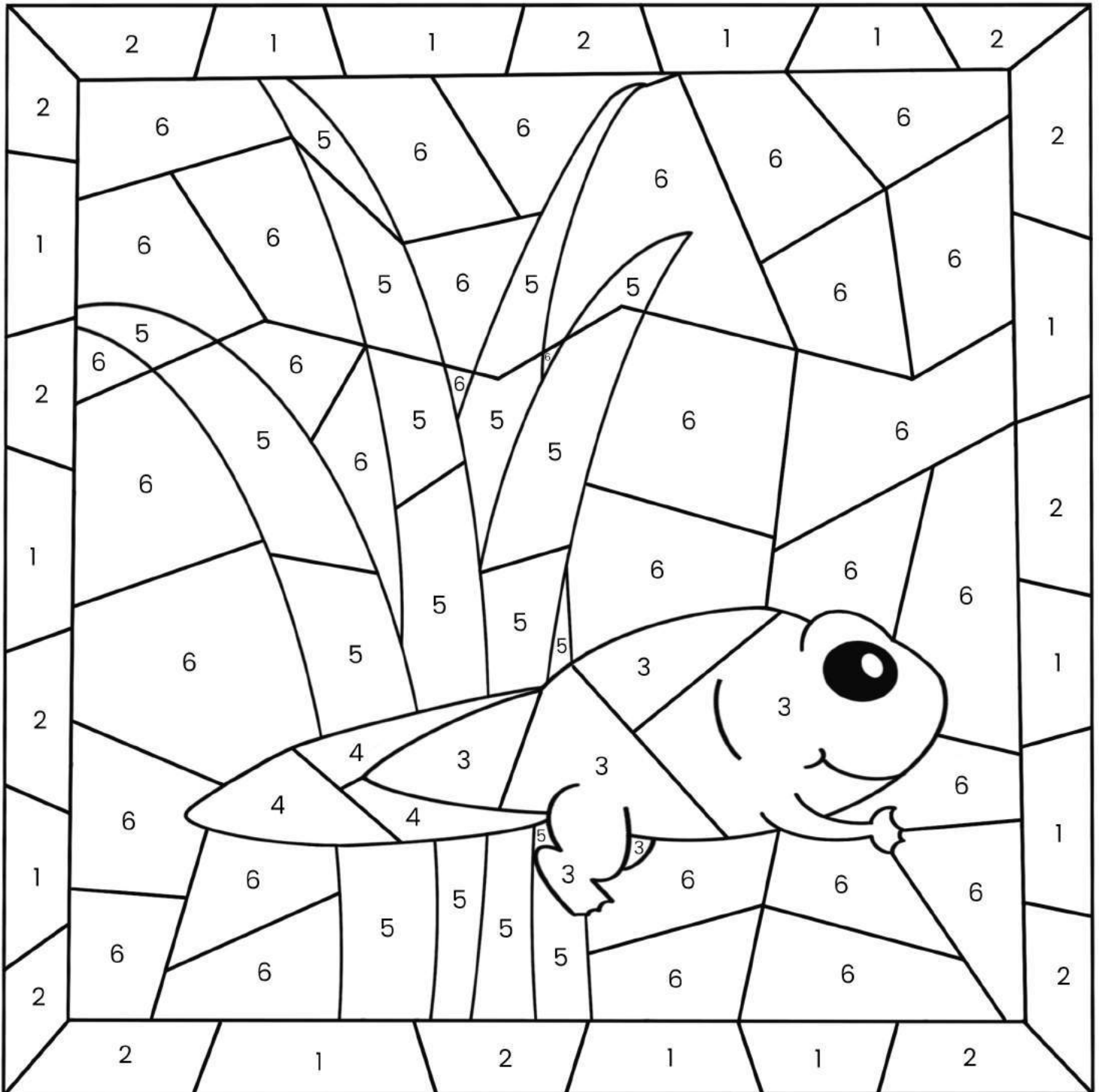


Color by Number

Directions: Color the picture according to the code below.

purple - 1
dark blue - 2
light green - 3

yellow - 4
green - 5
light blue - 6



Color by Number

Directions: Color the picture according to the code below.

purple - 1

pink - 2

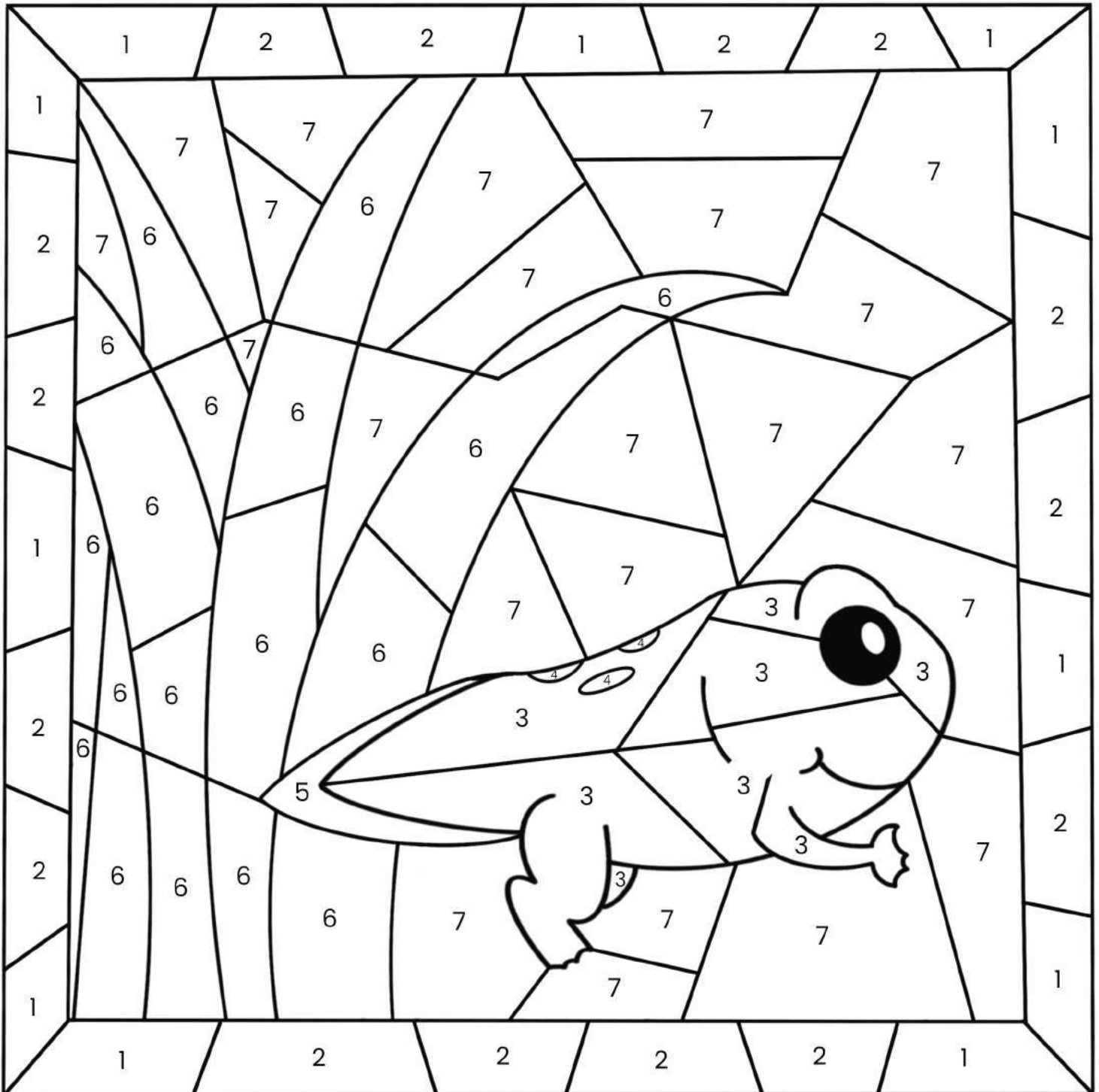
light green - 3

brown - 4

yellow - 5

green - 6

light blue - 7

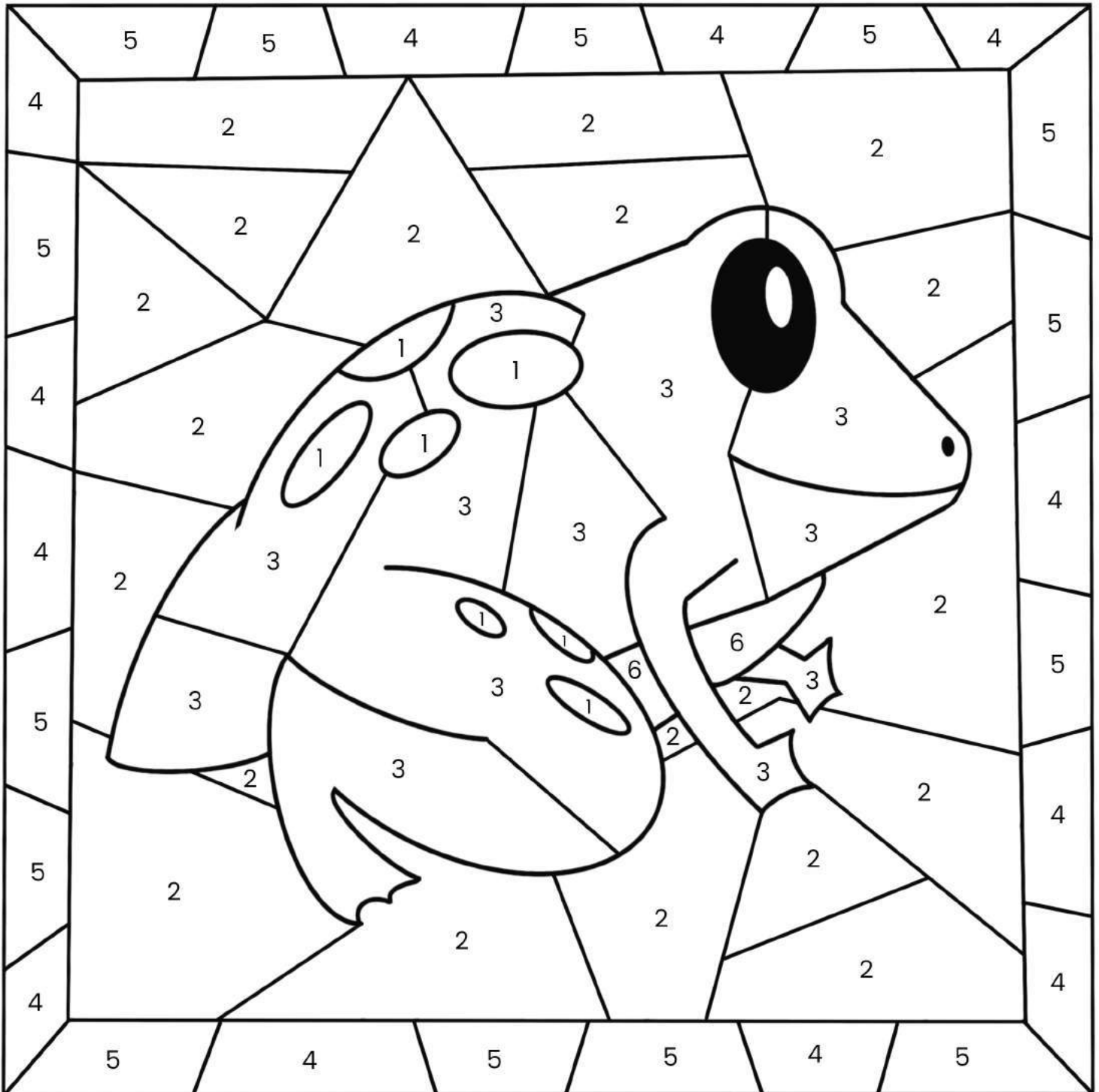


Color by Number

Directions: Color the picture according to the code below.

brown - 1
peach - 2
green - 3

blue - 4
pink - 5
yellow - 6



Color by Number

Directions: Color the picture according to the code below.

red - 1

green - 2

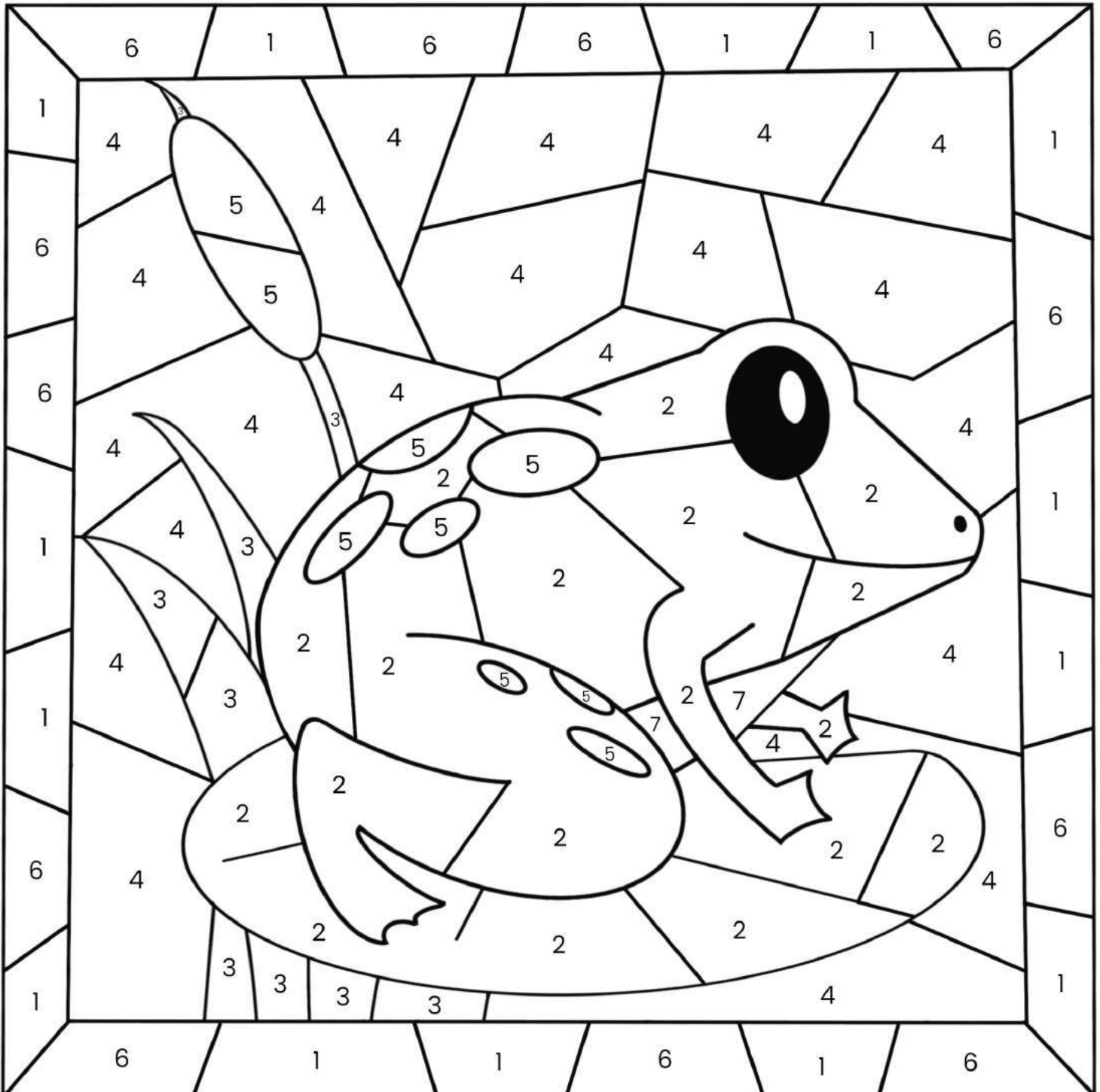
light green - 3

light blue - 4

brown - 5

dark purple - 6

yellow - 7



Thank you for downloading!

Graphic Credit goes to:



Color by Number

Directions: Color the picture according to the code below.

brown - 1

red - 2

green - 3

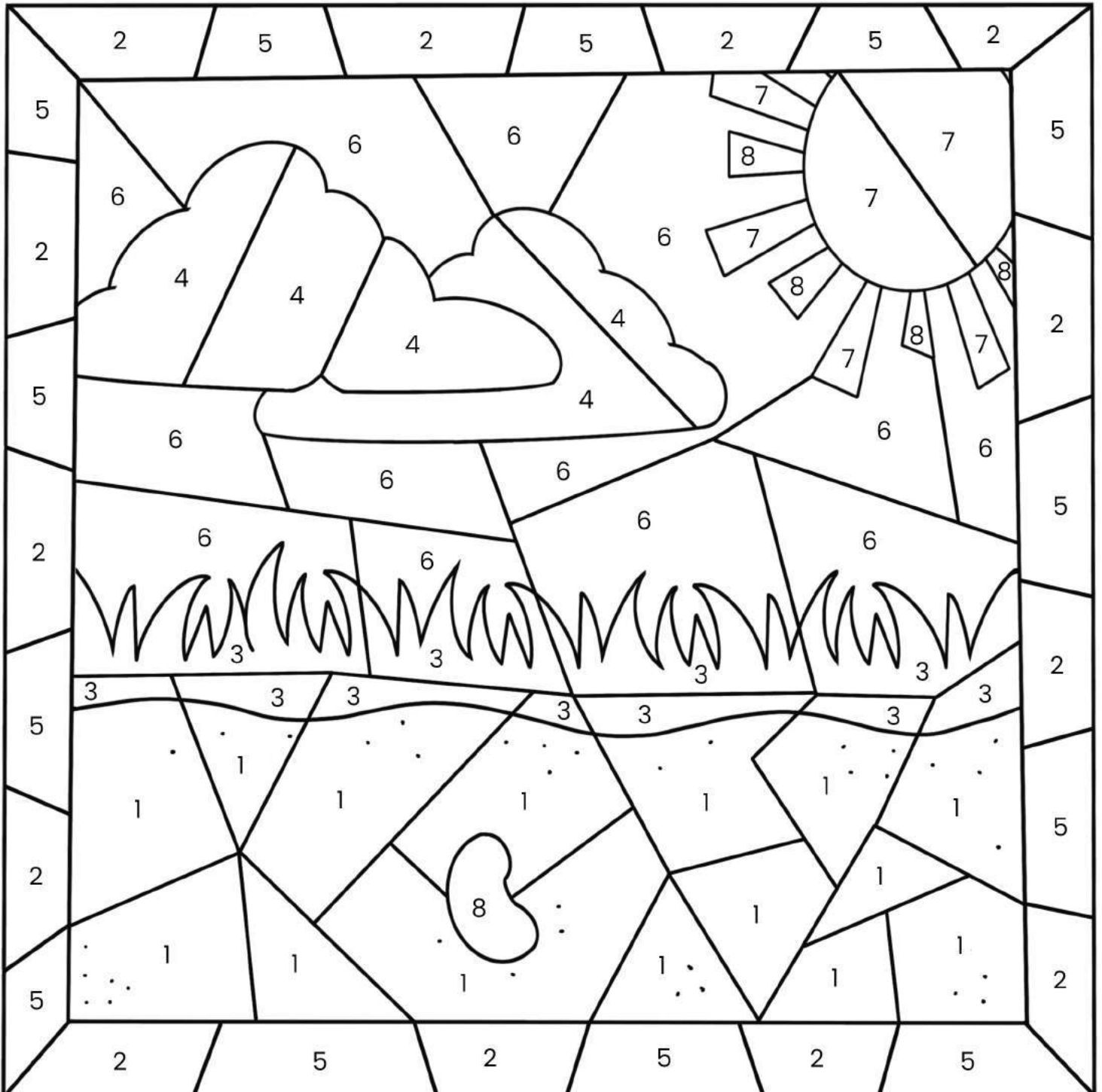
white - 4

pink - 5

light blue - 6

yellow - 7

light yellow - 8

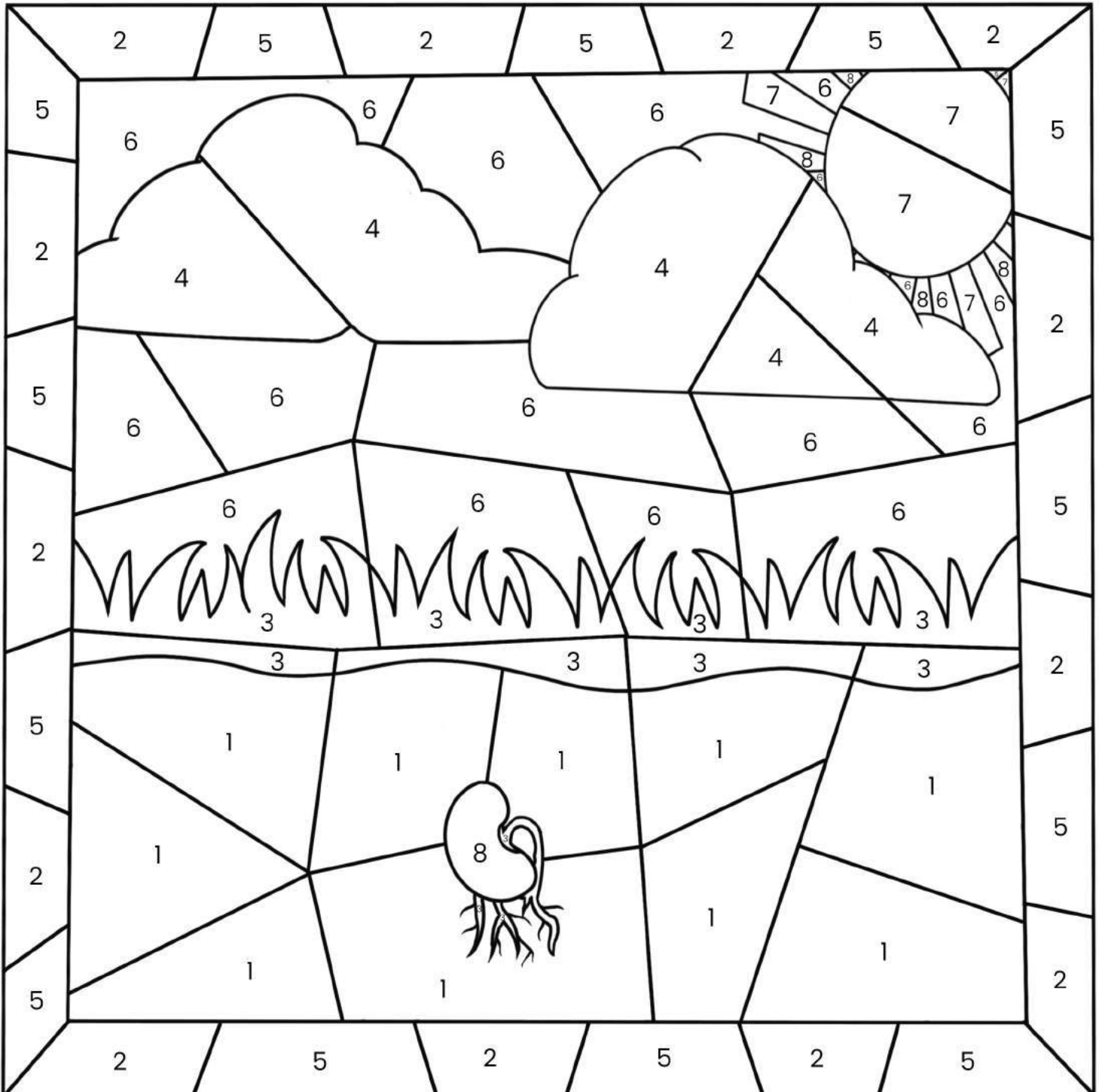


Color by Number

Directions: Color the picture according to the code below.

brown - 1
purple - 2
green - 3
white - 4

peach - 5
light blue - 6
yellow - 7
light yellow - 8

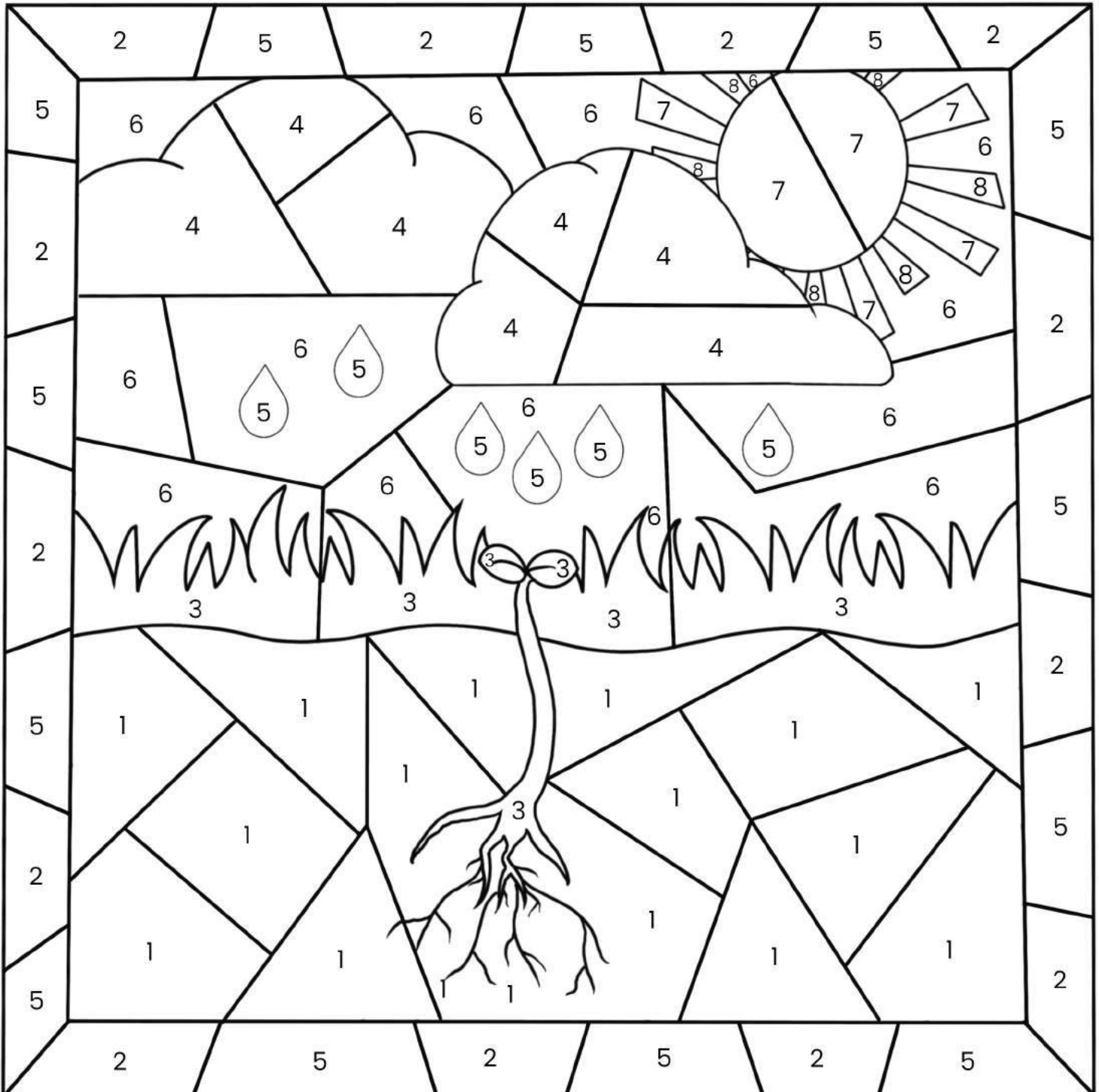


Color by Number

Directions: Color the picture according to the code below.

brown - 1
dark purple - 2
green - 3
white - 4

blue - 5
light blue - 6
yellow - 7
light yellow - 8

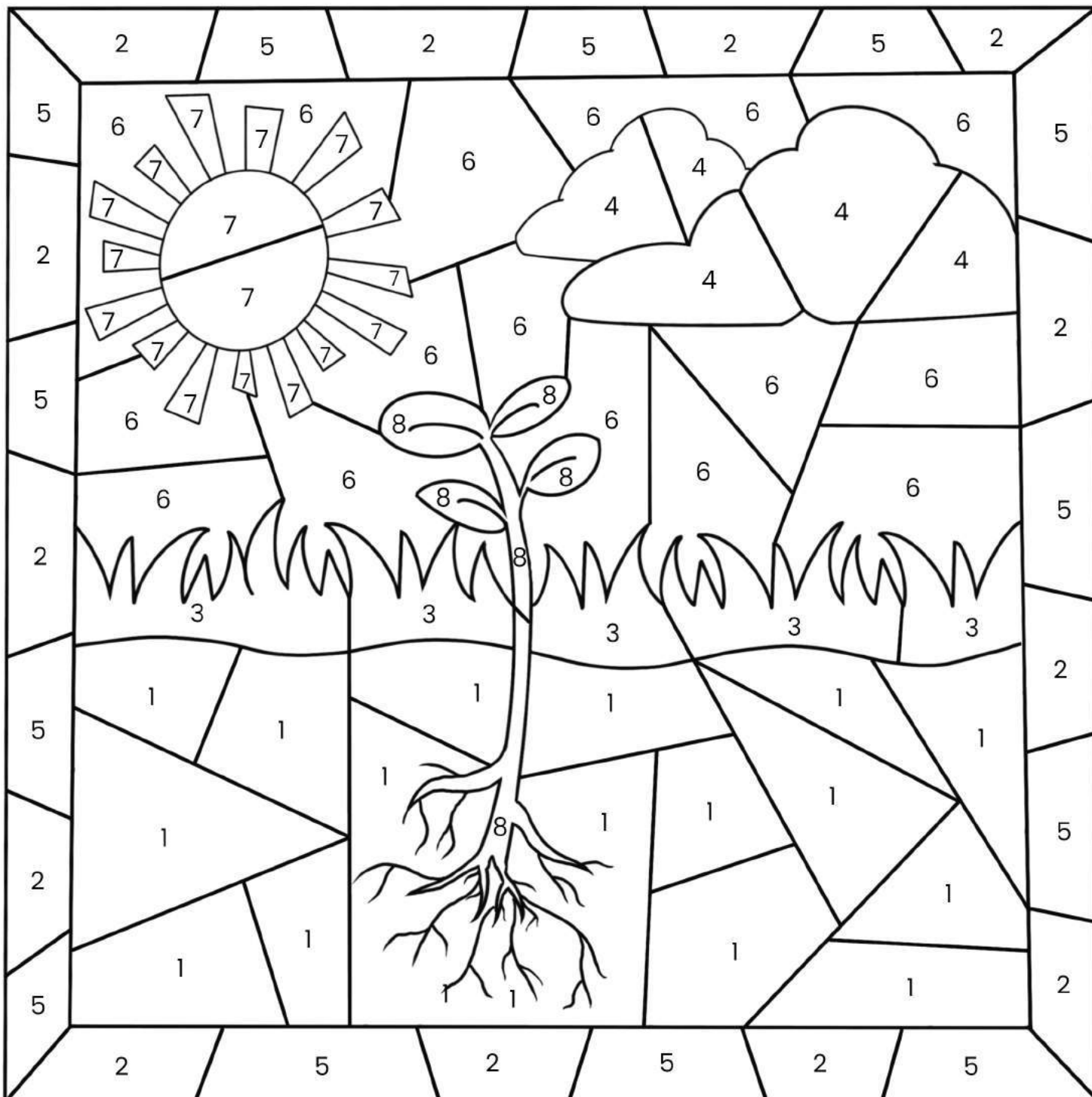


Color by Number

Directions: Color the picture according to the code below.

brown - 1
orange - 2
green - 3
white - 4

pink - 5
light blue - 6
yellow - 7
light green - 8

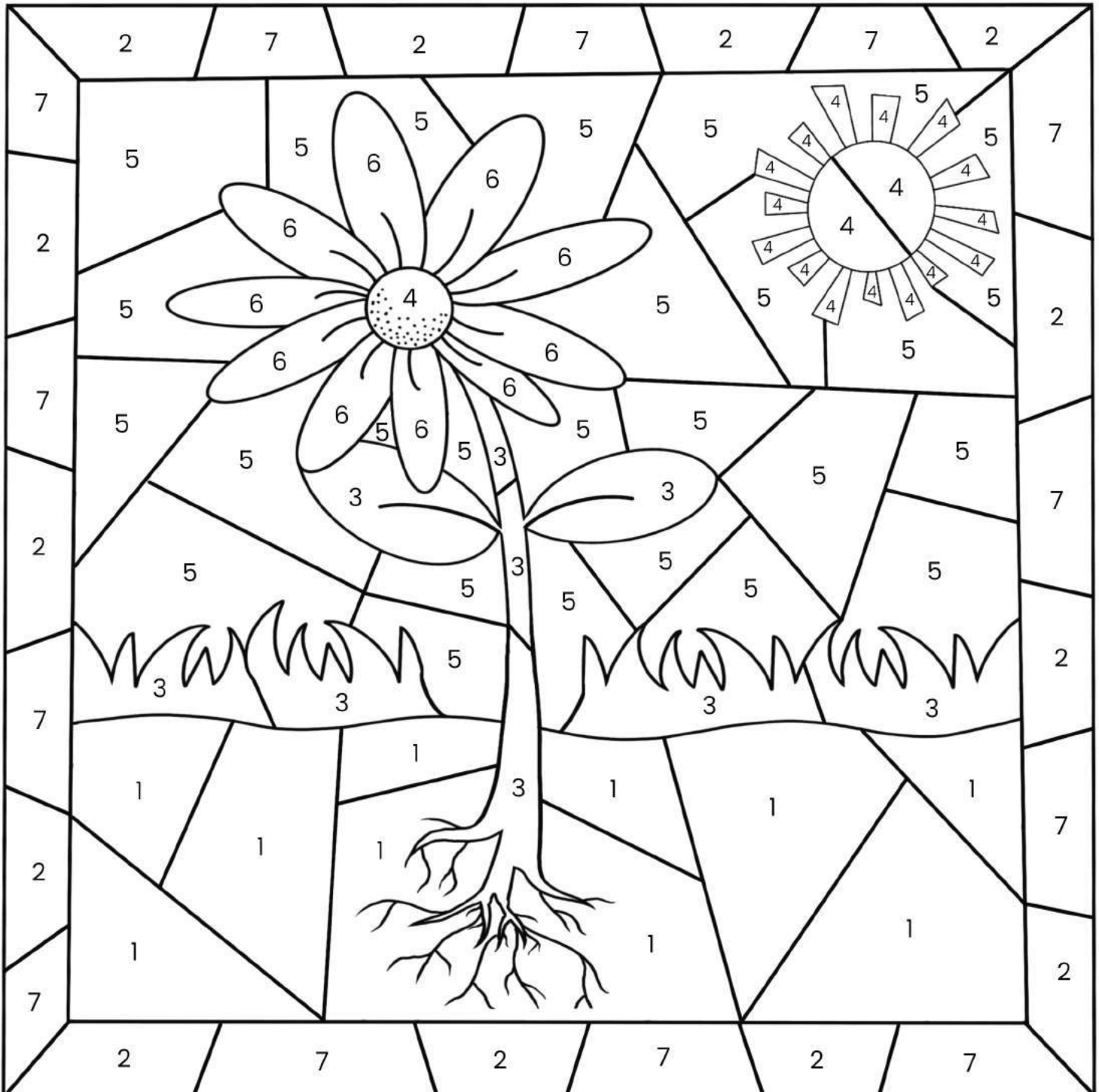


Color by Number

Directions: Color the picture according to the code below.

brown - 1
dark purple - 2
green - 3
yellow - 4

light blue - 5
pink - 6
blue - 7



Thank you for downloading!

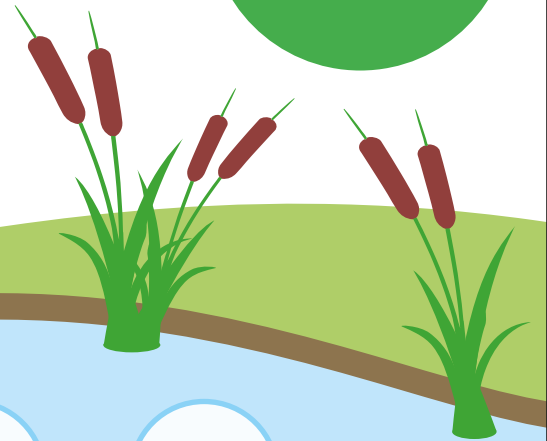
Graphic Credit goes to:



Frog Hop Maze

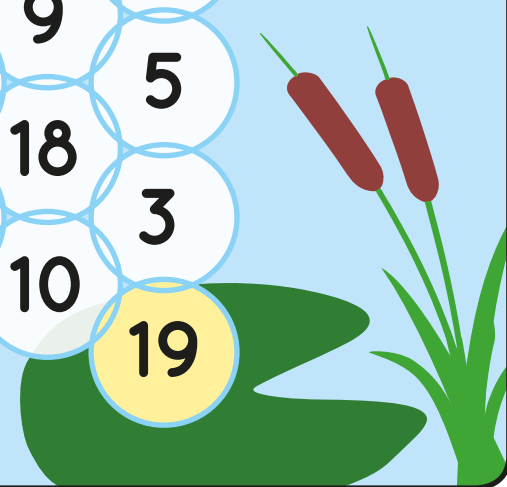
Help the frog swim to the lily pad by coloring only the bubbles with ODD numbers inside

Odd
Numbers



A maze of bubbles containing numbers. The starting bubble is 1 and the ending bubble is 19. The path of odd numbers is highlighted in yellow.

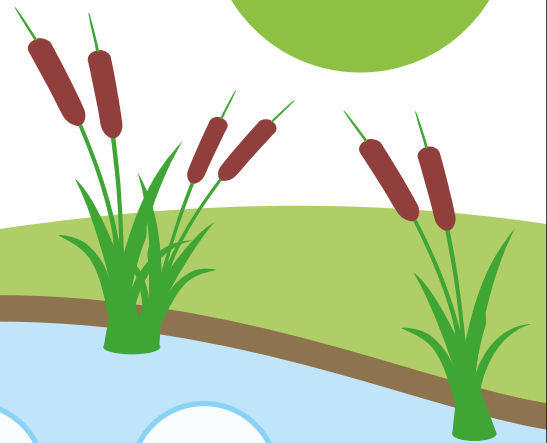
1	2	8	9	14	
3	5	6	7	1	3
10	7	11	12	4	3
6	4	17	8	4	11
8	2	9	8	2	11
20	1	10	5	2	6
4	4	18	14	6	6
16	2	13	13	15	15
4	5	3	8	8	15
11	1	10	10	16	16
7	6	12	9	9	16
14	18	15	15	5	5
9	3	7	18	18	5
1	13	7	2	18	3
12	16	4	2	10	3
16	4	10	10	19	19



Frog Hop Maze

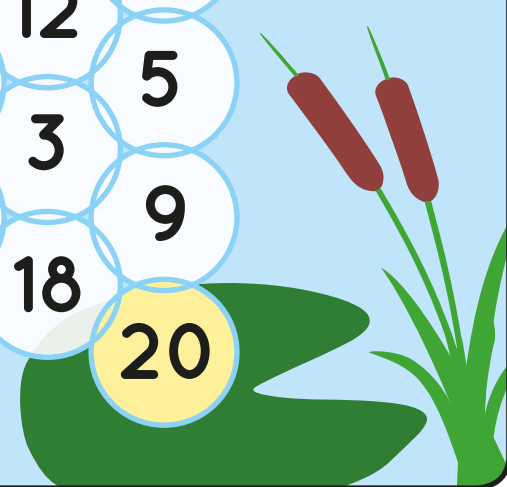
Help the frog swim to the lily pad by coloring only the bubbles with EVEN numbers inside

Even
Numbers



A maze of overlapping circles containing numbers. The starting point is a yellow circle with the number 2. The goal is to reach a yellow circle with the number 20. Only even numbers should be colored to form the path.

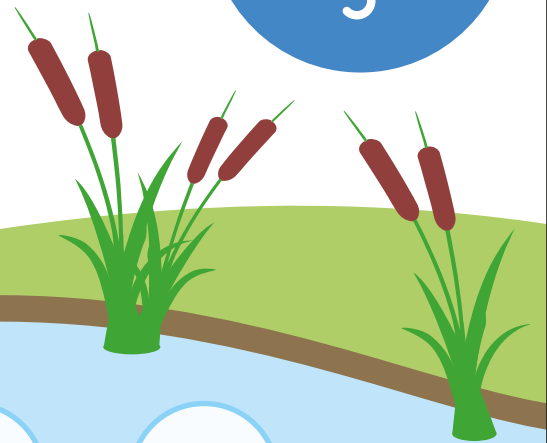
2	12	3	1	15
19	5	18	7	15
10	17	16	14	6
7	4	2	9	19
15	8	11	6	14
11	3	10	9	8
9	7	7	3	8
2	13	8	13	13
12	19	2	9	4
5	14	5	12	4
17	4	15	12	5
12	11	19	3	5
7	1	5	19	3
10	20	4	4	9
19	6	8	18	20



Frog Hop Maze

Help the frog swim to the lily pad by coloring only the bubbles that add up to 5

Number Bonds to 5

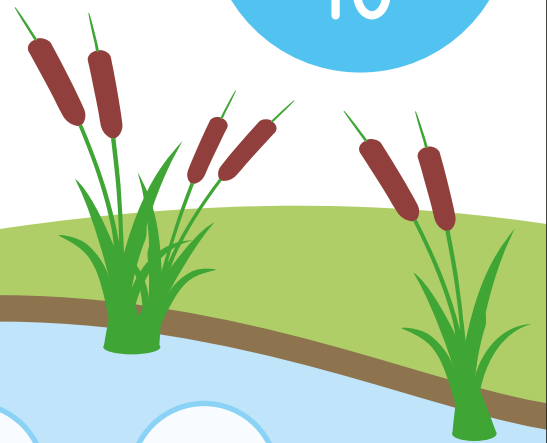


A maze of bubbles containing number bonds. The path starts at the frog and ends at the lily pad. The bubbles along the path are: 1+4, 1+2, 4+2, 2+1, 0+3, 4+2, 1+4, 3+3, 3+2, 0+5, 2+3, 8+2, 4+2, 1+5, 2+6, 5+0, 3+2, 0+5, 0+2, 1+3, 4+1, 4+3, 2+1, 2+3, 5+2, 4+2, 5+1, 4+1, 3+1, 2+2, 5+0, 0+2, 2+3, 1+1, 0+5, 1+1, 1+0, 5+1, 0+2, 2+3, 4+2, 1+4, 1+4, 3+2, 8+2, 1+4, 2+3, 3+2, 1+4, 2+2, 5+0, 0+4, 5+0.

Frog Hop Maze

Help the frog swim to the lily pad by coloring only the bubbles that add up to 10

Number Bonds to 10

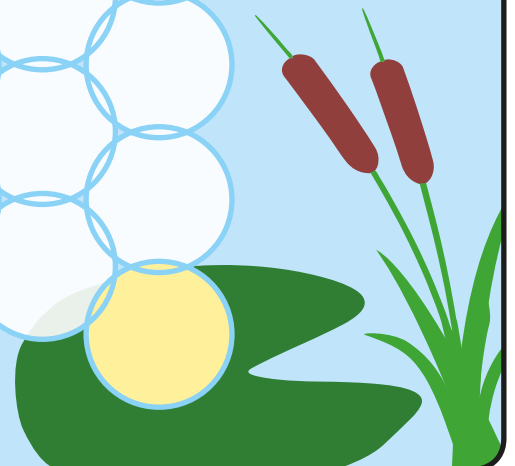
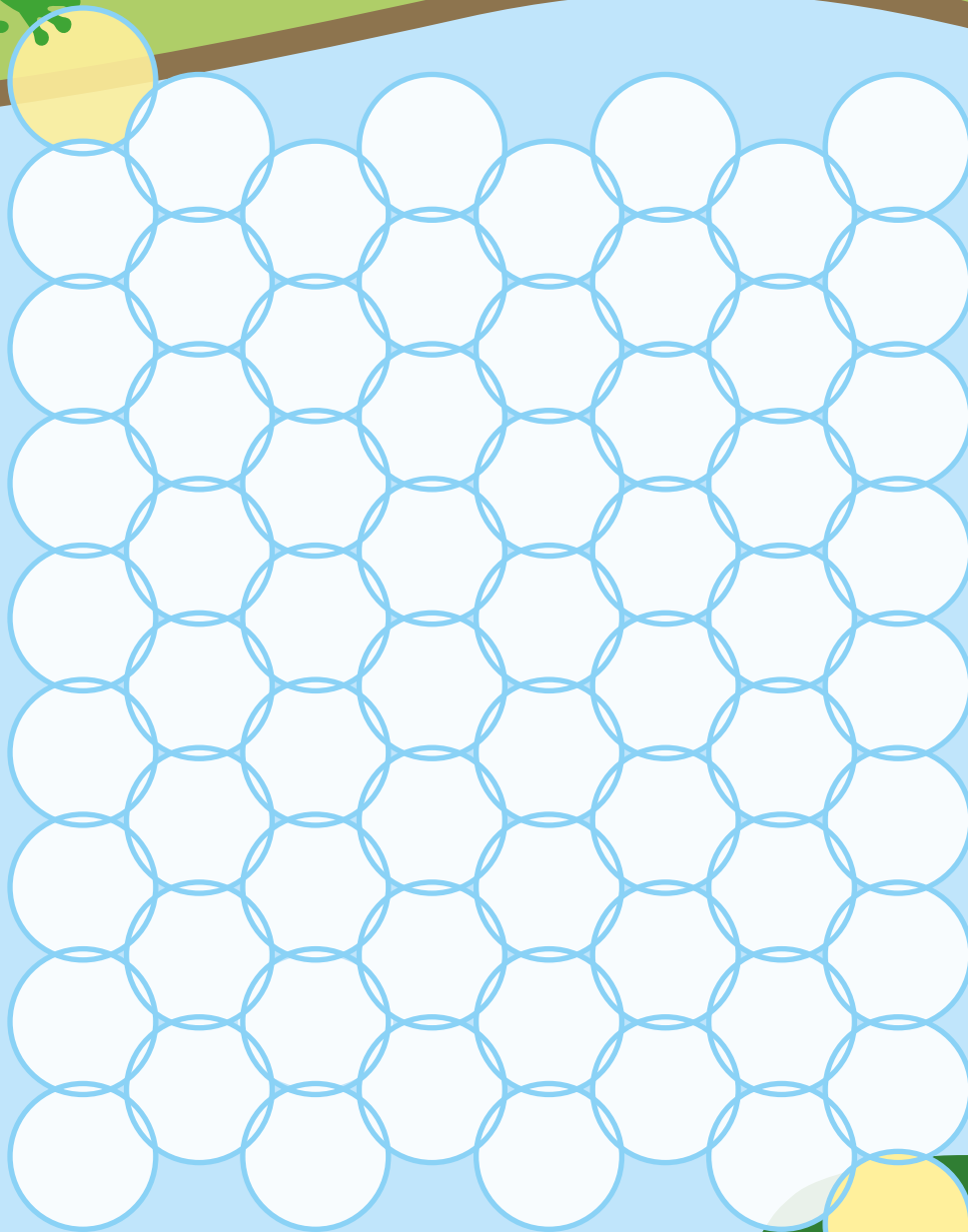
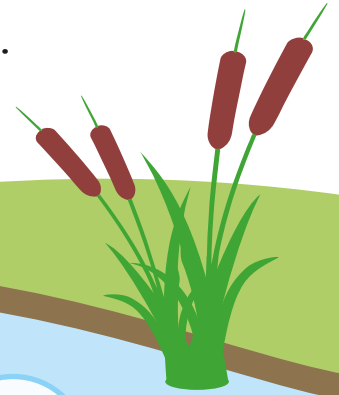


A maze of bubbles containing number bonds. The path starts at a yellow bubble with $8+2$ and ends at a yellow bubble with $7+3$. The bubbles are arranged in a grid with some overlapping. The number bonds in the bubbles are:

$8+2$	$5+5$	$4+5$	$8+2$	$3+2$
$1+2$	$2+2$	$4+3$	$5+5$	
$9+1$	$3+1$	$2+2$	$7+2$	
$8+3$	$7+3$	$8+1$	$6+3$	
$7+2$	$8+2$	$6+4$	$1+1$	
$5+3$	$5+4$	$3+7$	$8+2$	
$6+4$	$5+1$	$6+2$	$3+3$	
$8+2$	$8+2$	$3+1$	$4+6$	
$5+5$	$2+2$	$2+8$	$1+6$	
$1+1$	$2+3$	$9+1$	$6+2$	
$3+3$	$5+5$	$3+1$	$5+5$	
$6+2$	$8+1$	$5+6$	$1+9$	
$8+2$	$2+8$	$8+1$	$3+3$	
$7+1$	$6+6$	$2+2$	$5+2$	
$2+6$	$1+9$	$9+1$	$1+2$	
$1+8$	$6+1$	$6+4$	$5+5$	$7+3$

Frog Hop Maze

Help the frog swim to the lily pad by coloring in the bubbles



Frog Hop Maze - Solutions

Frog Hop Maze

Help the frog swim to the lily pad by coloring only the bubbles with ODD numbers

Odd Numbers

1	2	8	9	14
3	5	11	6	1
10	7	4	12	7
6	8	17	9	8
1	2	10	5	2
20	4	18	13	14
4	16	2	3	8
11	5	1	10	16
7	14	6	12	9
9	3	18	7	15
12	1	13	4	2
16	4	2	10	3
19				

Frog Hop Maze

Help the frog swim to the lily pad by coloring only the bubbles with EVEN numbers inside

Even Numbers

2	12	3	1	15
19	5	18	7	6
7	10	16	9	19
15	4	2	6	14
11	8	11	10	9
9	7	7	3	8
12	2	13	8	13
17	5	14	5	4
7	12	4	15	12
19	10	1	11	5
6	20	8	4	3
8	18	20	9	5
18	20			

Frog Hop Maze

Help the frog swim to the lily pad by coloring only the bubbles that add up to 5

Number Bonds to 5

1+4	1+2	0+5	1+4	6+0
2+3	4+2	4+0	5+2	4+2
4+1	5+1	2+1	1+3	4+2
3+3	0+3	4+2	1+4	3+2
5+0	3+3	3+2	0+5	8+2
4+2	1+4	2+3	8+2	5+0
3+2	4+2	1+5	2+6	1+3
4+1	0+5	0+2	1+3	2+3
5+2	4+2	4+3	2+1	4+1
3+1	2+2	5+1	5+0	0+2
2+3	1+1	0+5	1+1	5+1
4+2	0+2	2+3	1+0	5+1
4+2	6+2	4+2	1+4	5+1
1+4	8+2	1+4	2+3	3+2
2+2	5+0	0+4	5+0	5+0

Frog Hop Maze

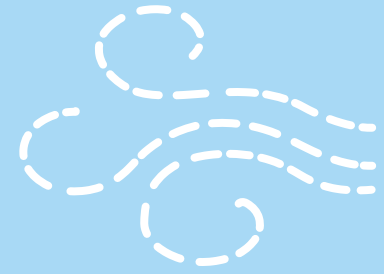
Help the frog swim to the lily pad by coloring only the bubbles that add up to 10

Number Bonds to 10

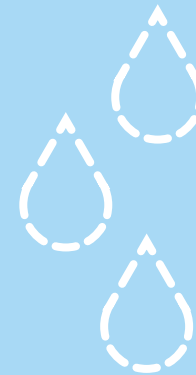
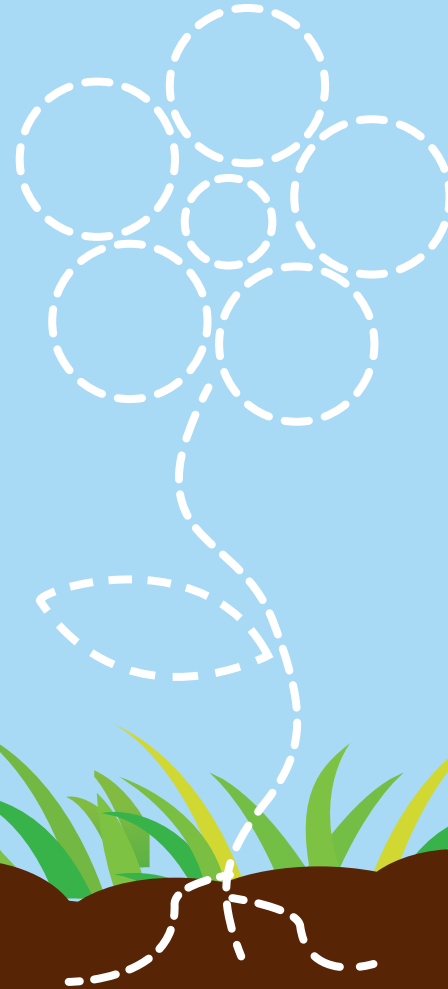
8+2	5+5	4+5	8+2	3+2
1+2	2+2	4+3	5+5	7+2
8+3	9+1	7+3	3+1	2+2
7+2	7+3	8+1	8+1	6+3
5+3	7+2	8+2	6+4	1+1
6+4	5+4	8+2	3+7	8+2
8+2	6+4	5+1	6+2	3+3
8+2	8+2	3+1	6+2	4+6
5+5	2+2	2+2	2+8	1+6
1+1	2+3	9+1	6+2	6+2
3+3	5+5	3+1	5+5	5+5
6+2	8+1	5+6	1+9	3+3
7+1	8+2	2+8	8+1	5+2
2+6	6+6	1+9	9+1	1+2
1+8	6+1	6+4	5+5	7+3



Sunlight



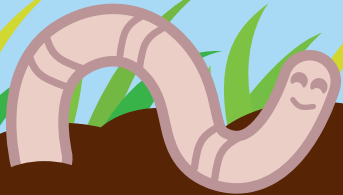
Air



Water



Soil



Space to grow

Growing a Flower