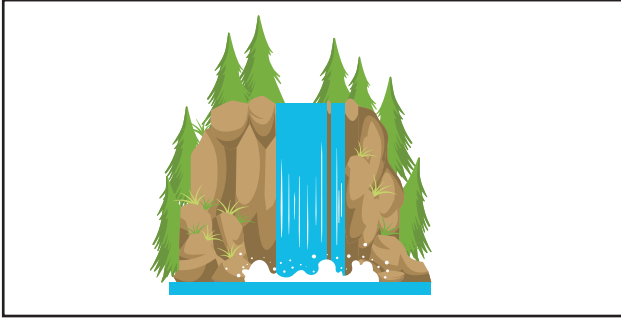


Name: \_\_\_\_\_

# Bodies of Water



## WATERFALL

A waterfall is a river or other body of water's steep fall over a rocky ledge into a plunge pool below.



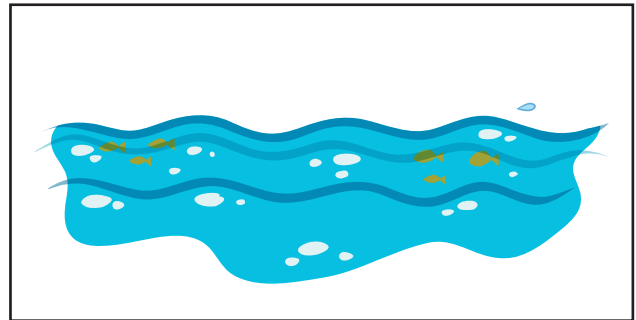
## POND

A pond is an area filled with water, either natural or artificial, that is smaller than a lake.



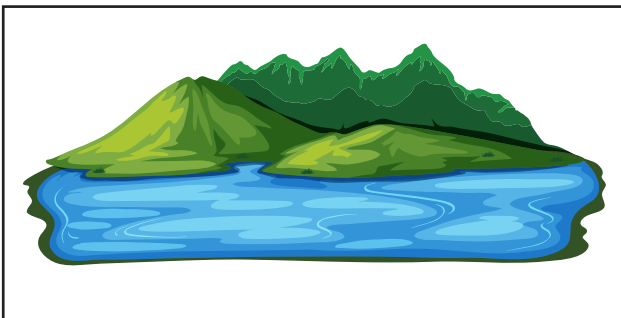
## RIVER

A river is a natural flowing watercourse, usually freshwater, flowing towards an ocean, sea, lake or another river.



## OCEAN

The ocean is a huge body of saltwater that covers about 71 percent of the Earth's surface.



## LAKE

a large body of water surrounded by land.



## WETLAND

The ocean is a huge body of saltwater that covers about 71 percent of the Earth's surface.

Name: \_\_\_\_\_

# Bodies of Water

Directions: Fill in the Blank

lake

river

ocean

ponds

sea

1. The smallest bodies of water are \_\_\_\_\_.
2. A \_\_\_\_\_ is a large. Flowing body of water that usually empties into a sea or ocean.
3. \_\_\_\_\_ is a body water covered by land on all sides.
4. An \_\_\_\_\_ is the largest body of water and have salt water.
4. A \_\_\_\_\_ is a large body of salty water that is often connected to an ocean.

Name: \_\_\_\_\_

# Bodies of Water

Directions: Draw a picture of each body of water.

River

Ocean

Wetland

Ponds

Lake

Waterfall

Name: \_\_\_\_\_

# Bodies of Water VOCABULARY

River River River

Ocean Ocean Ocean

Waterfall Waterfall

Ponds Ponds Ponds

Ponds Ponds Ponds

Lake Lake Lake

Wetland Wetland

Name: \_\_\_\_\_

# Bodies of Water

## WORD SEARCH

A	T	E	R	W	O	B	N	O
A	H	T	W	A	T	N	U	F
E	G	K	S	T	X	T	U	J
K	R	I	V	E	R	W	D	E
O	J	M	E	R	O	Y	N	M
S	P	L	C	F	S	O	A	H
H	O	C	E	A	N	N	L	U
B	N	H	W	L	V	K	T	W
Q	D	N	I	L	A	K	E	L
A	N	T	G	U	R	O	W	U

RIVER

OCEAN

WETLAND

POND

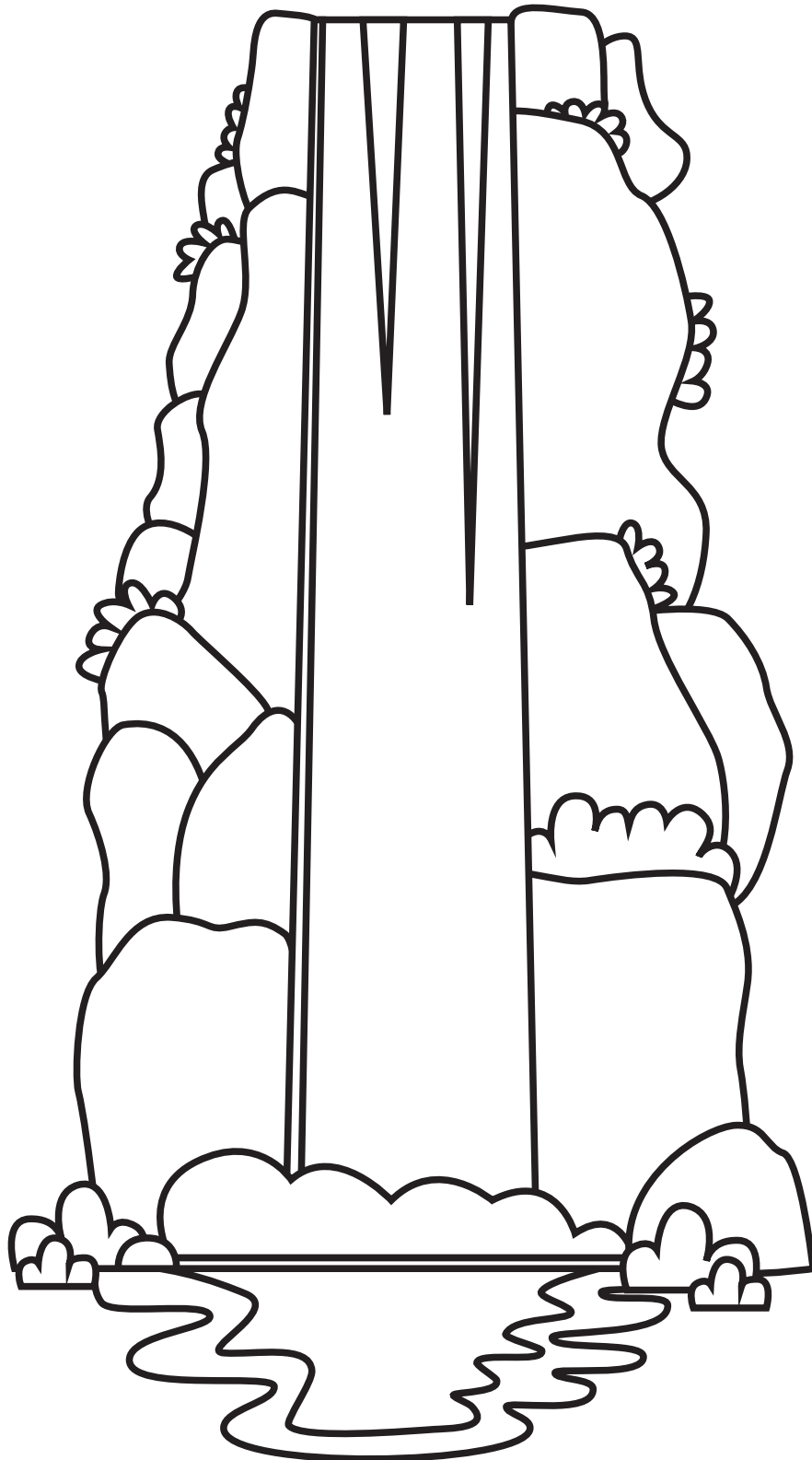
LAKE

WATERFALL

Name: \_\_\_\_\_

# Waterfall

Direction: Color the waterfall.



Name: \_\_\_\_\_

# Bodies of Water

## WORD SCRAMBLE

Directions: Arrange the letters to form a word then color the pond.

OAENC

--	--	--	--	--

PODN

--	--	--	--

WEATFALLR

--	--	--	--	--	--	--	--	--

VRIRE

--	--	--	--	--

WATELND

--	--	--	--	--	--	--

KLAE

--	--	--	--

