

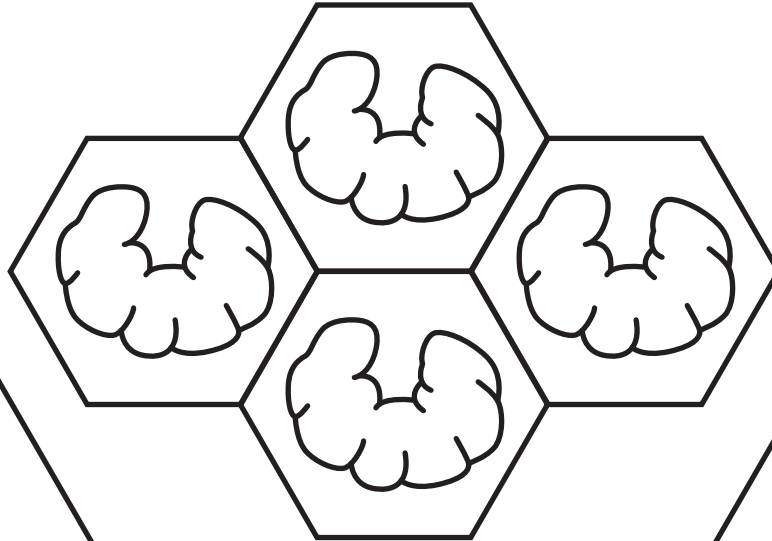
Honey Bee
Life Cycle

Cut the broken lines
and paste the foldouts from the other page

Paste Here

Egg Stage

The life of a honey bee starts when the queen bee lays an egg. She lays each egg in a tiny cell within the honeycomb. The egg is very small, white, and shaped like a grain of rice.

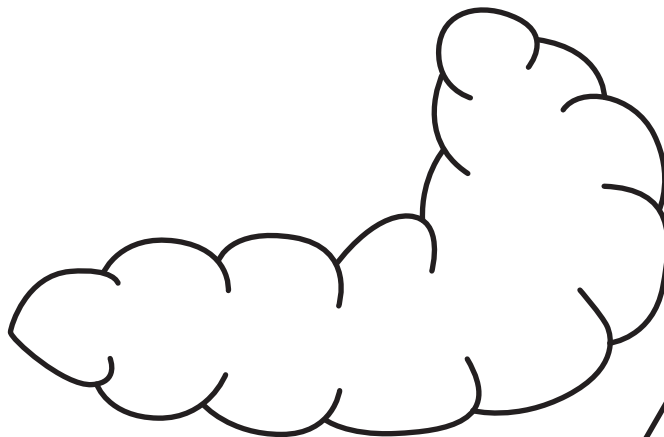


Fold Here

Fold Here

Larva Stage

After about three days, the egg hatches into a larva. At this stage, the larva looks like a small, white worm. Worker bees feed the larva a special substance called royal jelly, which helps it grow quickly.

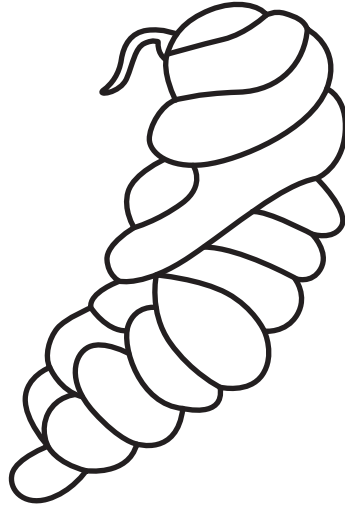


Paste Here

Paste Here

Pupa Stage

After about three days, the egg hatches into a larva. At this stage, the larva looks like a small, white worm. Worker bees feed the larva a special substance called royal jelly, which helps it grow quickly.



Fold Here

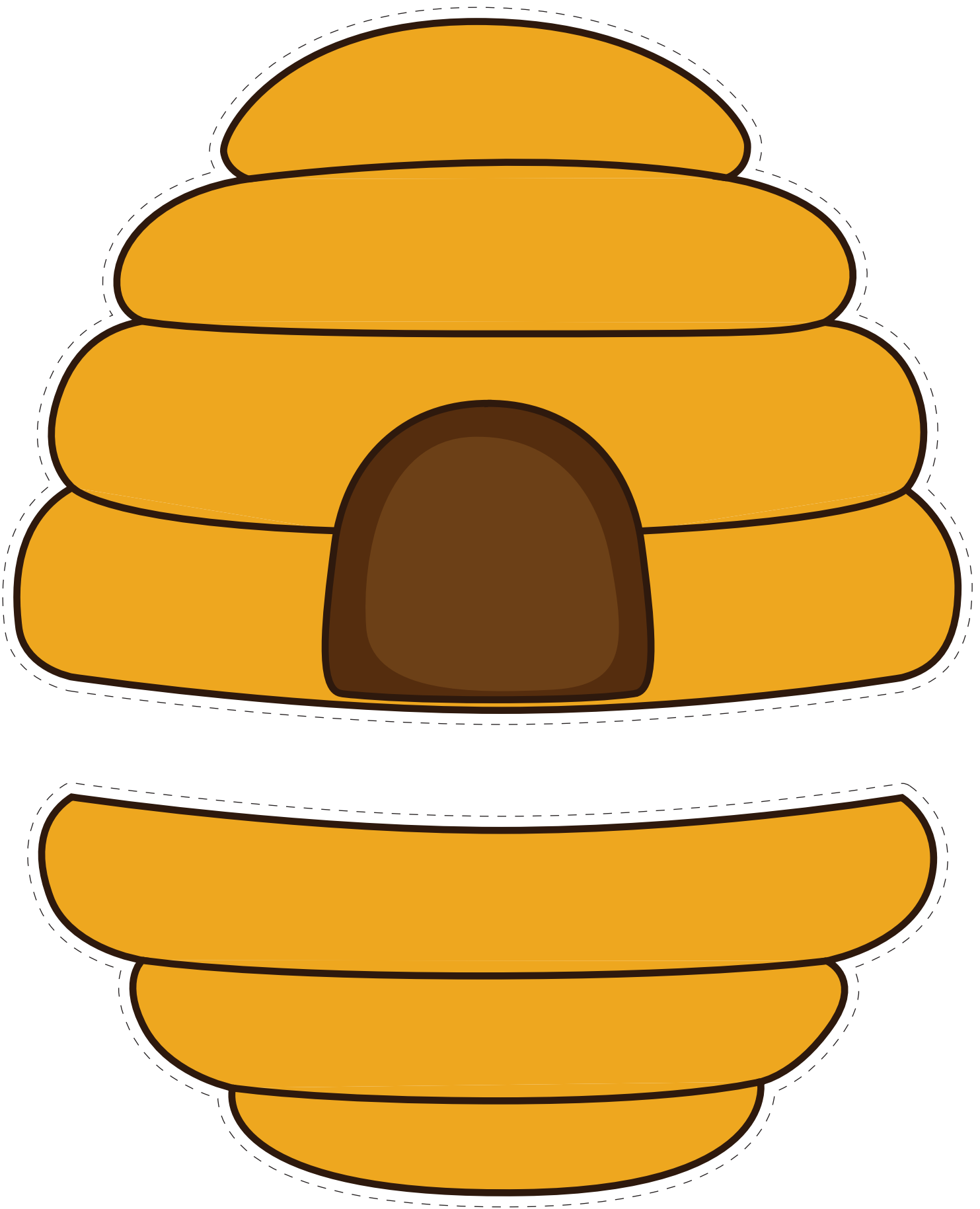
Fold Here

Adult Bee Stage

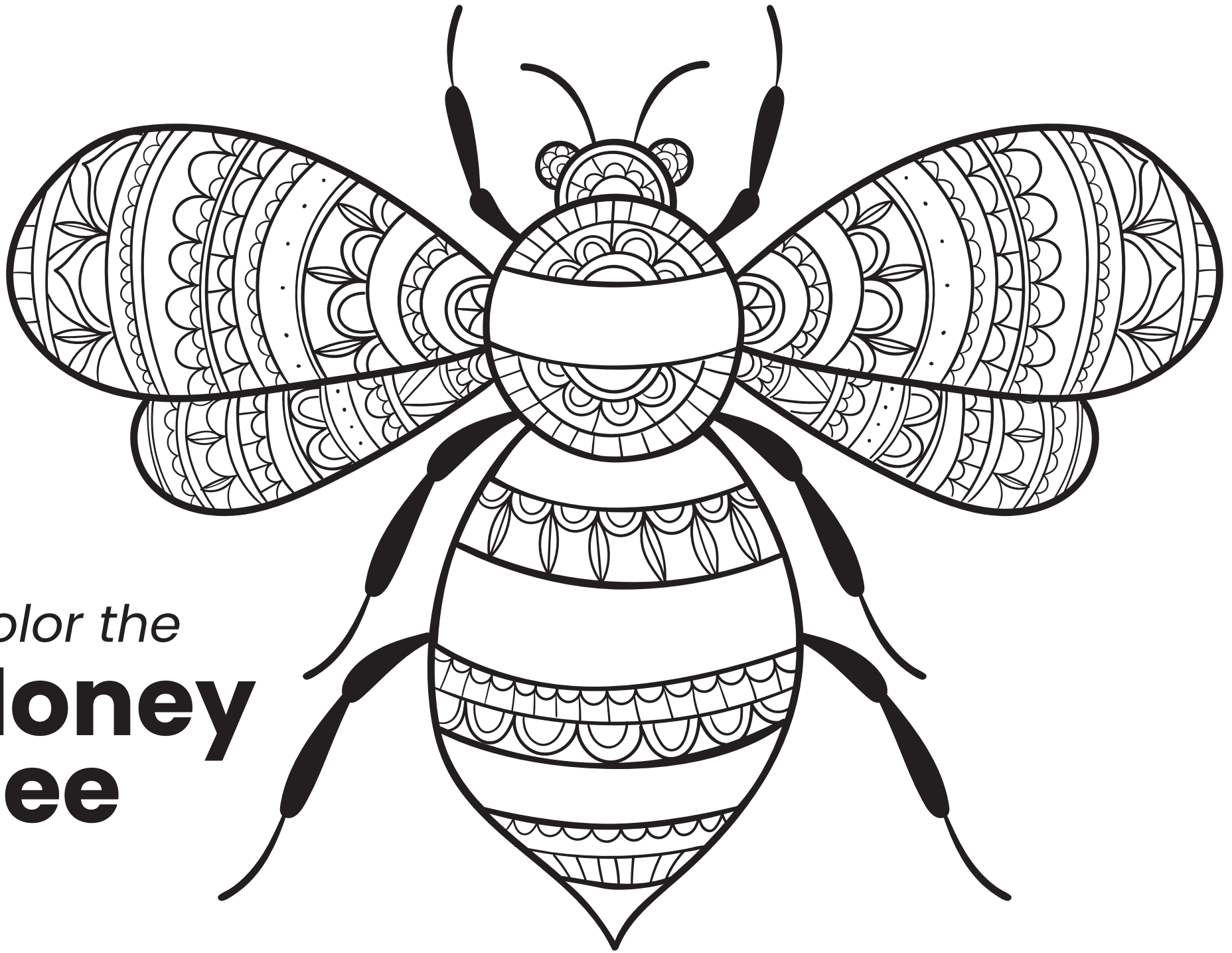
After about a week, the larva spins a cocoon around itself. Inside the cocoon, it transforms into an adult bee. This stage is called the pupa stage. While inside the cocoon, the bee undergoes many changes, developing its wings, legs, and other body parts.



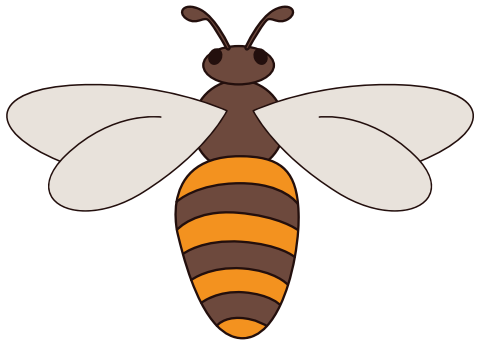
Paste Here



Cut the broken lines
and paste the foldouts from the other page



Color the
**Honey
Bee**



Build a
**Honey
Bee**

