

WHAT DO PLANTS AND ANIMALS NEED?

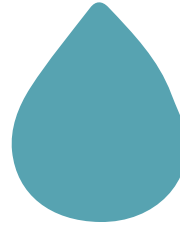
Plants and animals need several essential things to survive.



AIR



FOOD



WATER



SHELTER



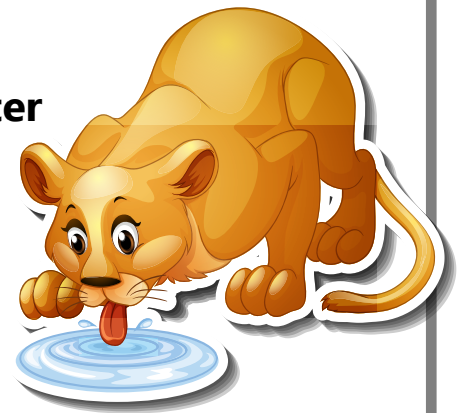
AIR

Plants take in carbon dioxide from the air, which they use during photosynthesis to produce food. Animals breathe in oxygen to fuel their cells and generate energy.

WATER

Plants absorb water through their roots, using it to transport nutrients and support photosynthesis.

Animals drink water to stay hydrated, helping their bodies function properly.



SHELTER

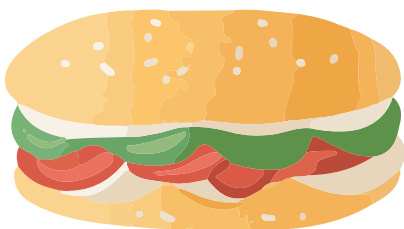
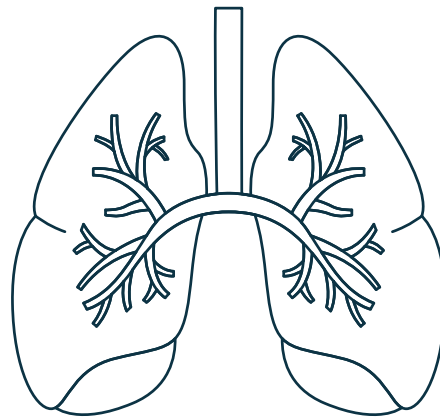
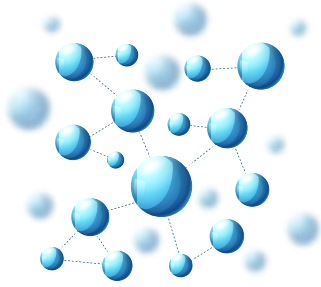
Plants need a suitable environment which includes the right amount of sunlight, soil, and space. Animals need shelter to protect themselves from predators and harsh weather and in which to raise their young.

FOOD

Plants create their food through photosynthesis, using sunlight, water, and carbon dioxide. Animals rely on external food sources, which they obtain by eating plants, other animals, or a combination of both.

SURVIVAL NEEDS

Nitrogen
Phosphorus
Potassium
Magnesium
Calcium



SURVIVAL NEEDS MATCHING GAME

Cut out and place images in corresponding columns

PLANTS

ANIMALS

BOTH

--	--	--

FILL IN THE BLANKS

Fill in each blank with either Plants or Animals.

_____ need food, which they get by eating plants, other animals, or both, depending on the species.

_____ need water to help transport nutrients from the soil, photosynthesize, and grow.

_____ need oxygen from the air to breathe and produce energy.

_____ need shelter to protect themselves from weather, predators, and to raise their young.

_____ need carbon dioxide from the air to perform photosynthesis, which is how they make their food.

_____ obtain nutrients from the soil and use sunlight to make their food through photosynthesis.

_____ need water to stay hydrated, help with digestion, and support other bodily functions.

_____ need a suitable environment where they can thrive, like proper soil and sunlight exposure.

FILL IN THE BLANKS

Fill in each blank with either Plants or Animals.

ANIMALS need food, which they get by eating plants, other animals, or both, depending on the species.

PLANTS need water to help transport nutrients from the soil, photosynthesize, and grow.

ANIMALS need oxygen from the air to breathe and produce energy.

ANIMALS need shelter to protect themselves from weather, predators, and to raise their young.

PLANTS need carbon dioxide from the air to perform photosynthesis, which is how they make their food.

PLANTS obtain nutrients from the soil and use sunlight to make their food through photosynthesis.

ANIMALS need water to stay hydrated, help with digestion, and support other bodily functions.

PLANTS need a suitable environment where they can thrive, like proper soil and sunlight exposure.

SURVIVAL NEEDS

Draw examples of the survival needs for each group.

Animals

Plants

PLANTS VS ANIMALS

A Venn diagram is a visual representation of sets and their relationships to each other. It consists of two or more overlapping circles, where each circle represents a set, and the area of overlap represents the elements that are shared between the sets.

Fill in the Venn diagram to compare and contrast the survival needs of plants and animals.

Plants

Animals

Needs of Both

