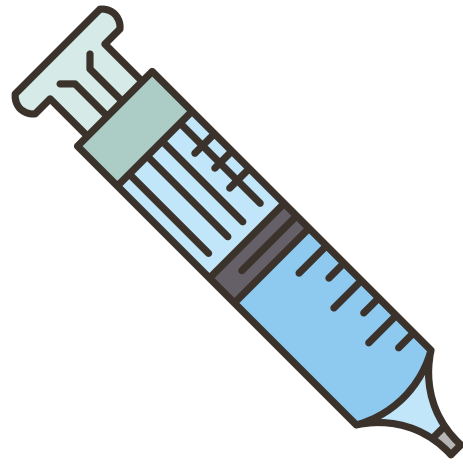


# Boyle's Law Experiment

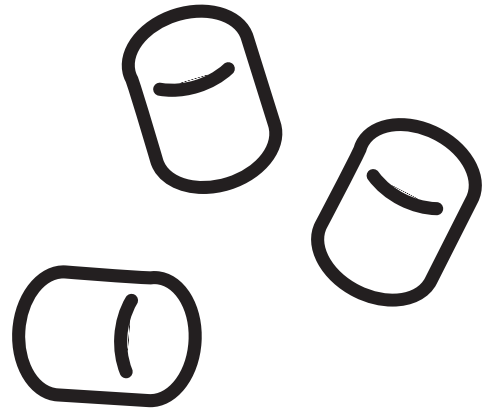


## Directions:

1. Gather one mini marshmallow and one syringe.
2. Take the plunger out of the syringe.
3. Add one mini marshmallow to the syringe.
4. Place the plunger back into the syringe and push all the air out.
5. Then cover the syringe opening with your finger and draw back on the syringe plunger.
6. Uncover the syringe.
7. Repeat.

## Supplies:

- Mini marshmallows
- Syringe



**#1- What happened when you uncovered the syringe opening?**

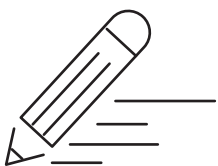
**#2- What surprised you about the experiment?**

# MY SCIENTIFIC JOURNAL

**1** MY QUESTION:



RESEARCH NOTES: **2**



# MY SCIENTIFIC JOURNAL

3

MAKE A HYPOTHESIS:

SUPPLIES:

4  
SET UP YOUR EXPERIMENT



# MY SCIENTIFIC JOURNAL

**5** RECORD YOUR DATA:



YOUR CONCLUSIONS

**6**

